

Table 1 - Suggested guidelines for lateral placement of mailboxes

Highway Type and ADT, (vpd)	Width of All-Weather Surface Turnout or Available Shoulder at Mailbox, ¹ (m) [ft]		Distance Roadside Face of Mailbox Is to Be Offset Behind Edge of Turnout or Usable Shoulder, (mm) [in.]	
	Preferred	Minimum	Preferred	Minimum
Rural Highway Over 10,000	> 3.6 [12]	2.4 [8]	200 to 300 [8 to 12]	0
Rural Highway 1,500 to 10,000	3.6 [12]	2.4 [8]		
Rural Highway 400 to 1,500	3.0 [10]	2.4 [8]		
Rural Road Under 400	2.4 [8]	1.8 [6] ²	200 [10] ³	
Residential Street Without Curb or All-Weather Shoulder	1.8 [6]	0.00		
Curbed Residential Street	Not Applicable		200 to 300 [8 to 12] ⁴	150 [6] ⁴

ADT = Average Daily Traffic
vpd = vehicles per day

*If a turnout is provided, this may be reduced to zero

Figure 4 - Suggested Minimum Clearance Distances to Nearest Mailbox in Mail Stops at Intersections

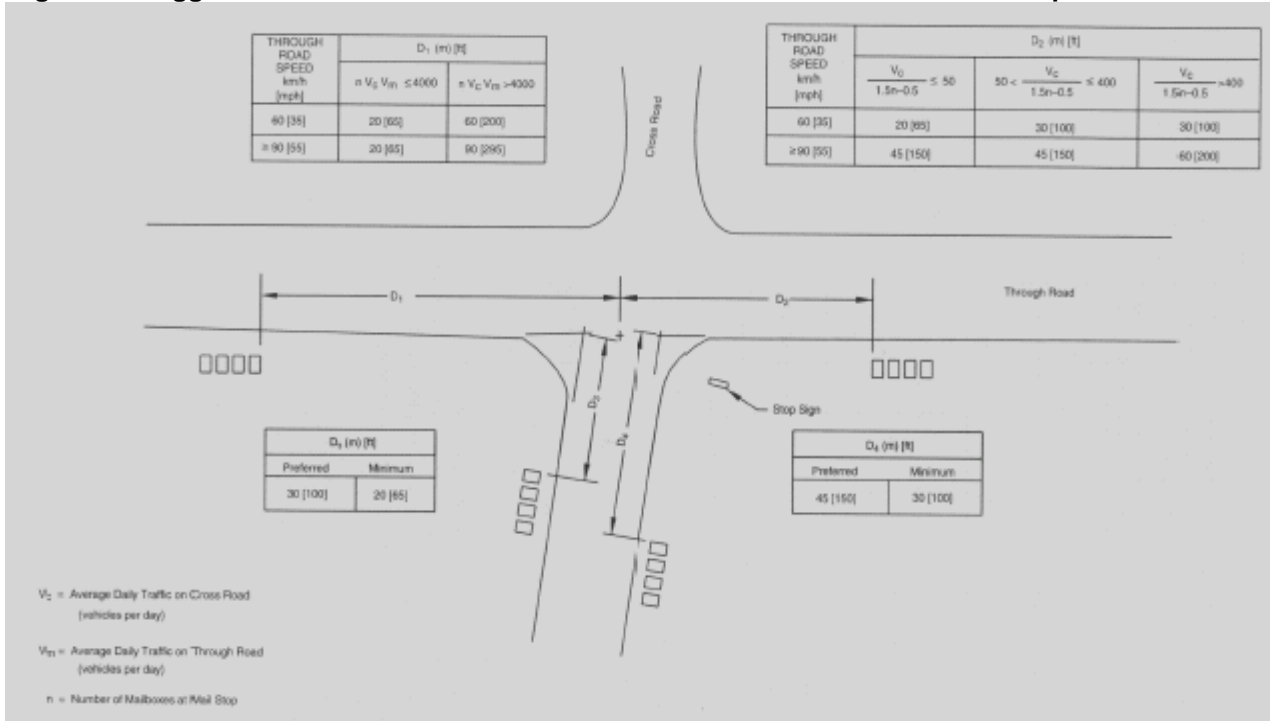


Figure 8 - Single and Double Mailbox Assemblies - Series A

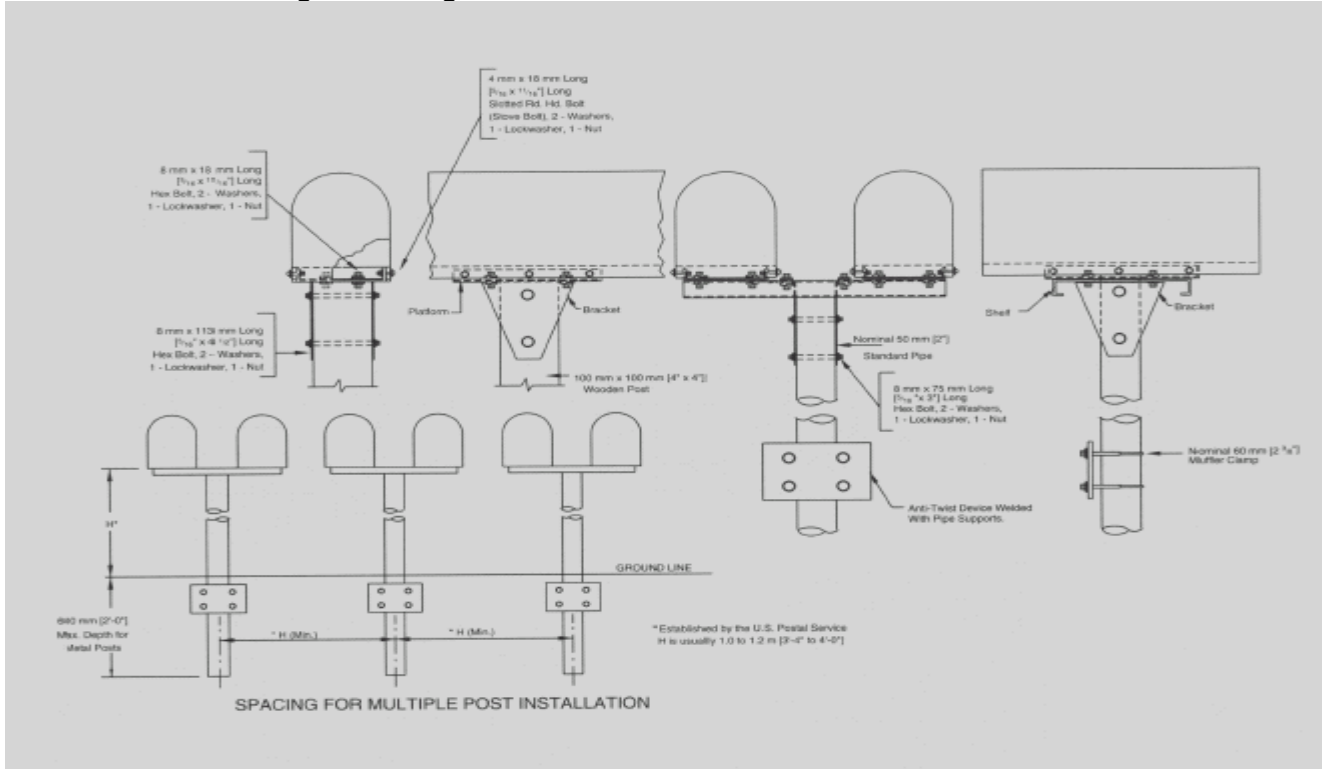


Figure 9 - Mailbox Support Hardware - Series B

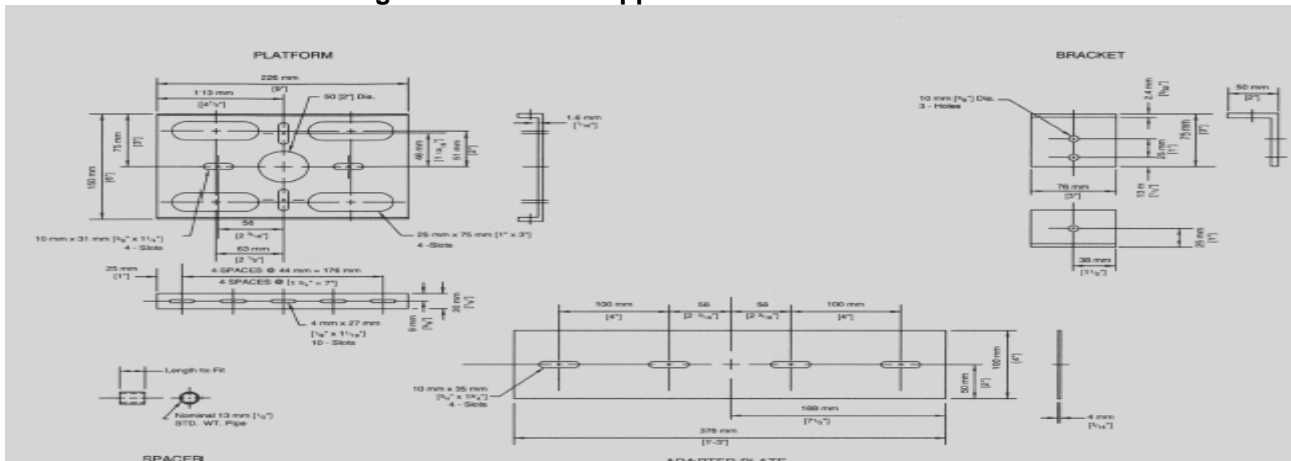


Figure 10 - Single and Double Mailbox Assemblies - Series B

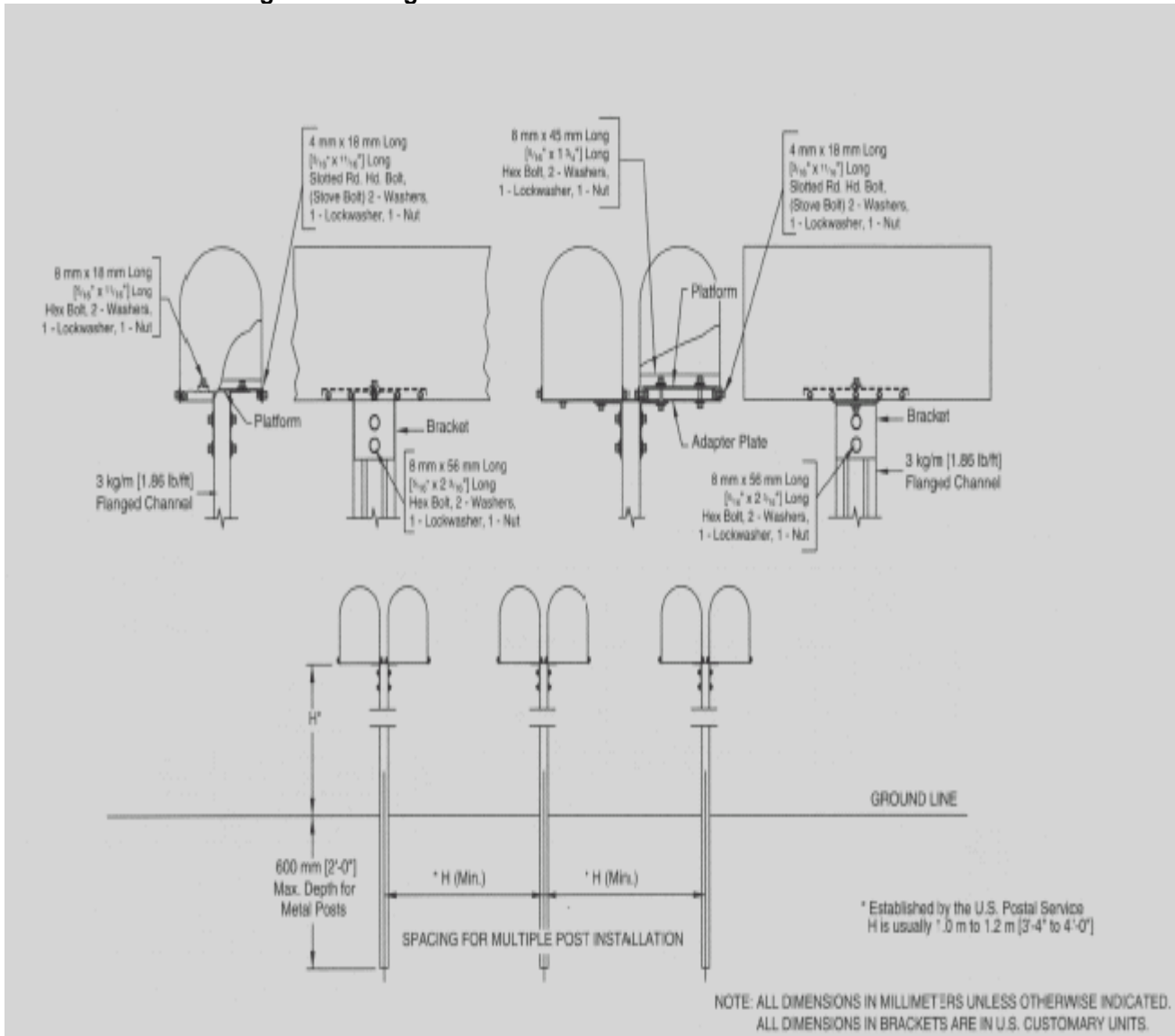


Figure 11 - Single and Multiple Mailbox Assemblies - Series C

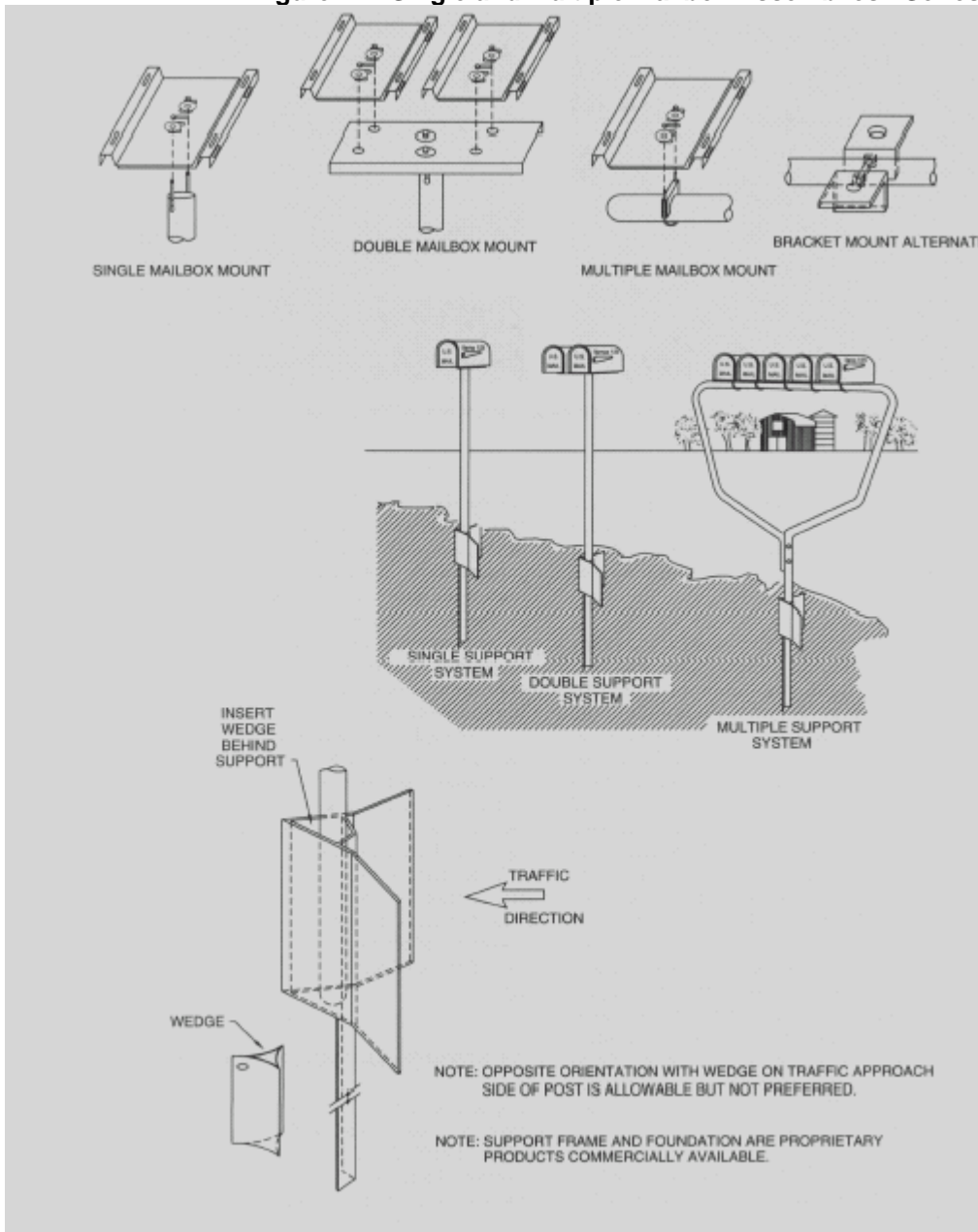


Figure 13 - Cantilever Mailbox Supports

