

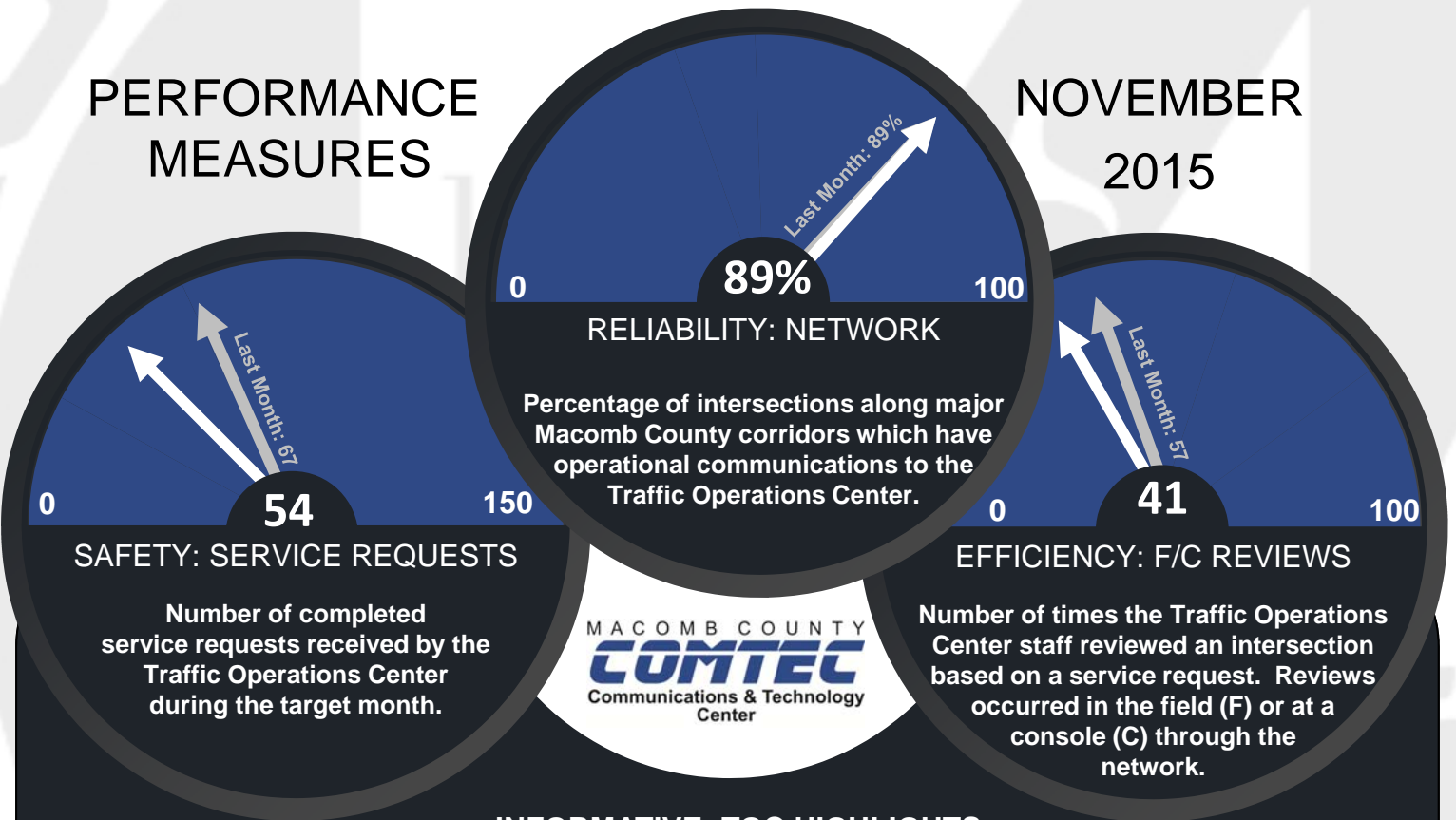
MACOMB COUNTY DEPARTMENT OF ROADS

TRAFFIC OPERATIONS CENTER

"To provide and maintain a reliable real-time traffic operations system, in coordination with county stakeholders, that enables a safe, efficient, and informative travel experience."

PERFORMANCE MEASURES

NOVEMBER 2015



INFORMATIVE: TOC HIGHLIGHTS

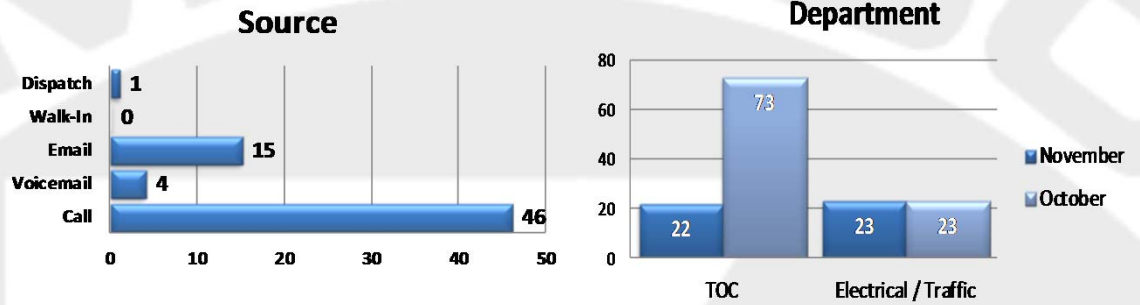
With construction season reaching a close, Traffic Operations Center (TOC) engineers during the month of November worked with Macomb County Department of Roads (MCDR) Traffic staff to facilitate traffic operations adjustments for a variety of projects that reached completion or winter shutdown periods. The staff has worked diligently to ensure the traffic grid throughout Macomb County is responding to all traffic needs.

As well, Information Technology/Intelligent Transportation Systems (IT/ITS) staff worked on multiple upgrades to TOC systems, including traffic signal databases and field communication in a variety of locations. These systems are critical to using the TOC as a hub of traffic-based data and more efficient operations throughout the county.

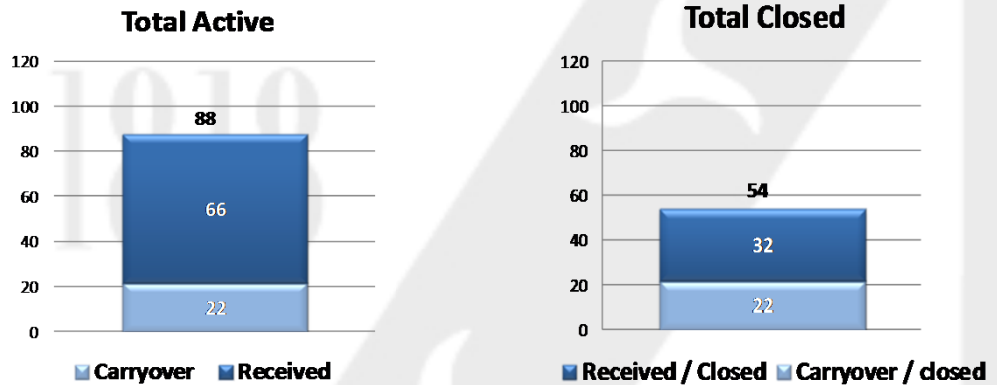


John Abraham, PhD, PE, PTOE
Director of Traffic & Operations
Macomb County Department of Roads
117 S Groesbeck Hwy
Mount Clemens, MI 48043
586-463-8671
JAbraham@RCMCWeb.org

Service Requests

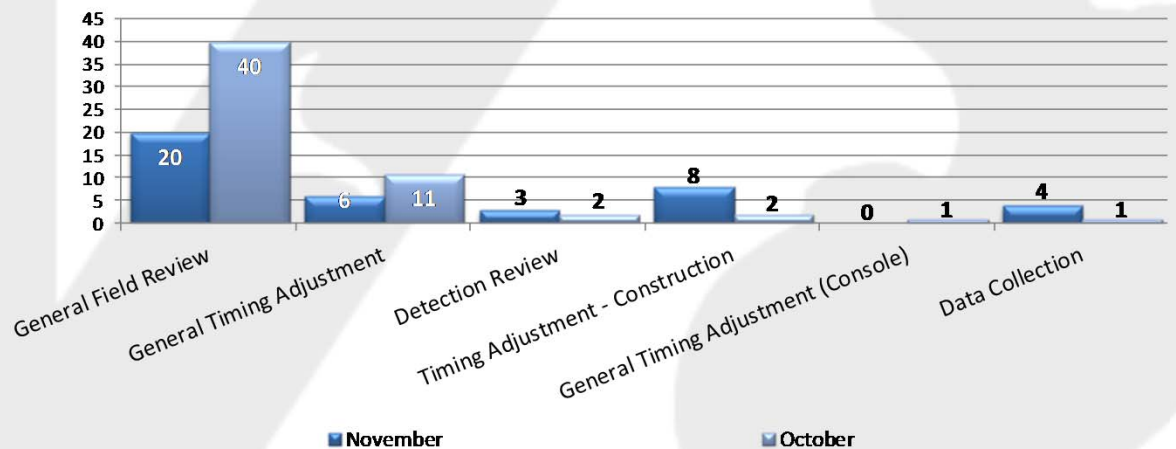


For the month of November, 45 incoming requests regarding traffic signals were received. The 'Source' chart shows how the service request was received by the TOC. The 'Department' chart shows the group handling the service request.



At the end of November, 22 service requests will carry over into December.

Field/Console Reviews Completed

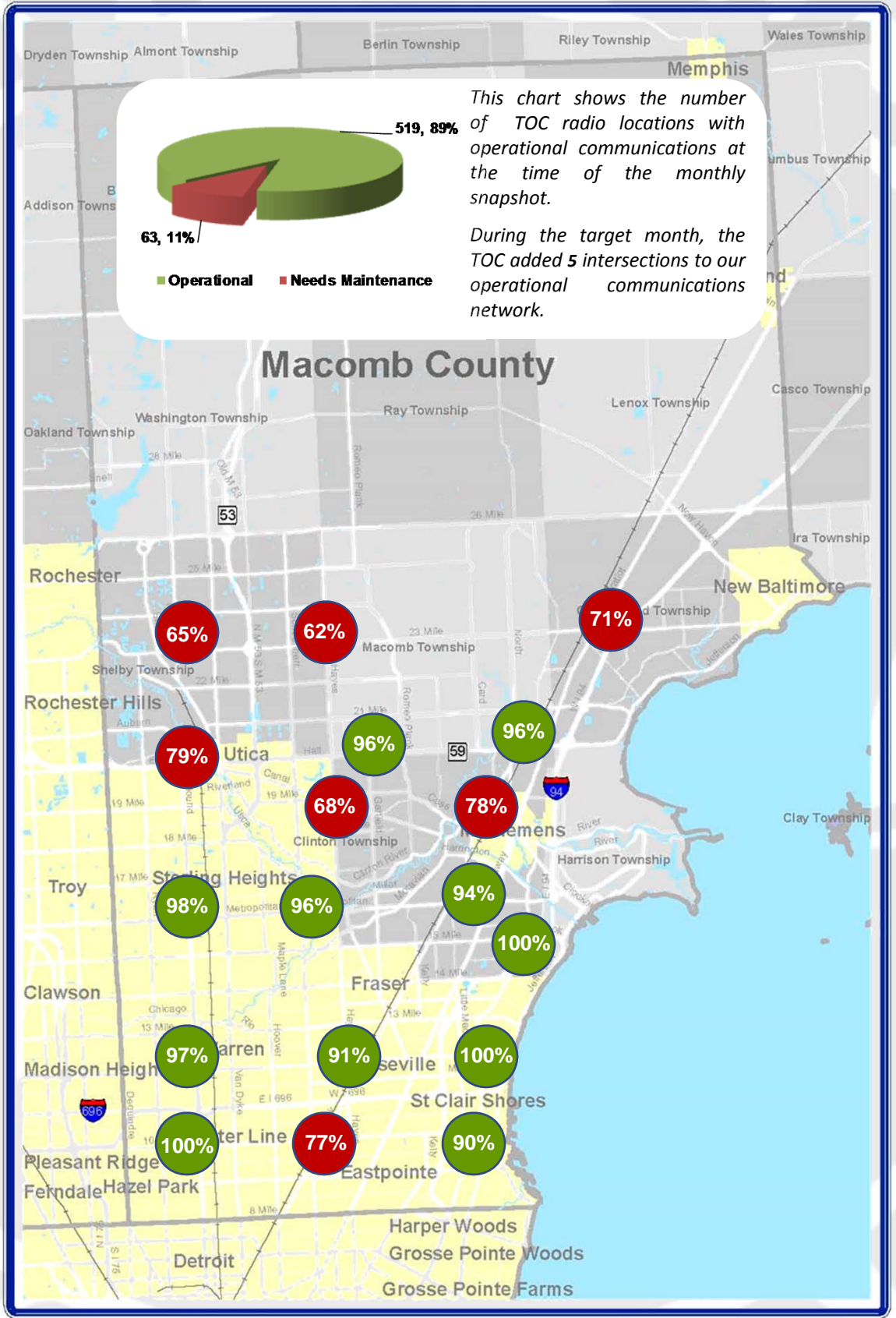


Compilation of the general field/console review types completed by the Traffic Operations Engineers. Field/console reviews are assigned after a public/stakeholder concern warrants an investigation. Reviews are either conducted in the field or at an Operator console through a network connection.

Regional Communications Summary

ITS MAINTENANCE

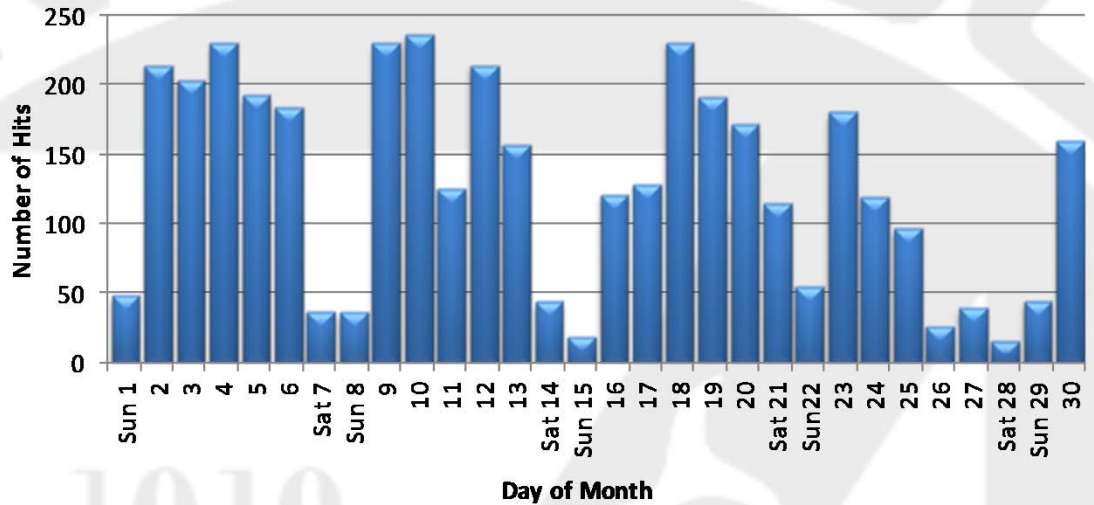
November 2015



Macomb County maintains 18 communications hubs which transmit data between the Traffic Operations Center and regions of traffic signal controllers across the County. The numbers above represent a one-time monthly snapshot of operational communication to each region. Regions considered to have operational communications (90% or above) are shown in green, while regions found not to have operational communications (<90%) at the time of the snapshot are shown in red.



MCDR Website Hits



Combined website hits accrued at the <http://www.rcmcweb.org/> and the new <http://roads.macombgov.org/>.

County Corridor Communications Availability

Corridor	Current Month	Previous Month	Change
9 Mile	100%	100%	0%
10 Mile	100%	90%	10%
I-696 Service Drive	100%	100%	0%
12 Mile	100%	100%	0%
14 Mile	100%	100%	0%
15 Mile	100%	100%	0%
Metro Parkway	95%	92%	3%
Hall (M-59)	96%	100%	-4%
Dequindre	100%	100%	0%
Ryan	100%	92%	8%
Mound	100%	98%	2%
Hoover	100%	100%	0%
Schoenherr	100%	100%	0%
Hayes	100%	95%	5%
Gratiot (M-3)	99%	99%	0%
Harper	100%	100%	0%

The table above represents a one-time monthly snapshot of communications along major corridors in Macomb County. Corridors which are considered to have operational communications (90% and above) are shown in green, while corridors found not to have operational communications (<90%) at the time of the snapshot are shown in red.

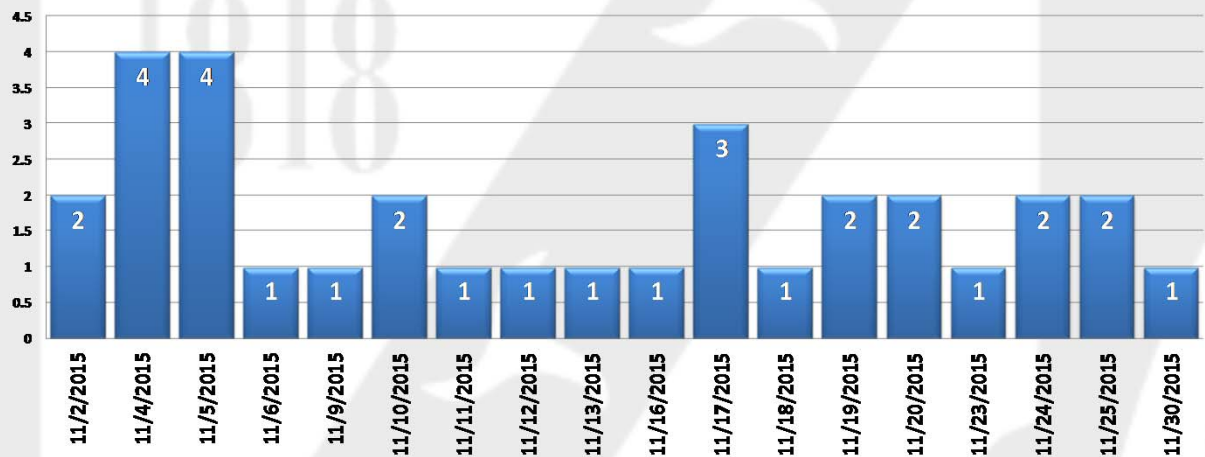
Executed Roadway Upgrades

Date	Intersection Identification	Organization	Upgrade
11/2/2015	241: Metro Parkway and Jefferson	MCDR	New ITS cabinet installed
11/11/2015	198: Metro Parkway and Groesbeck (M-97)	MCDR	Construction completed
11/24/2015	139: Van Dyke (M-53) and 15 Mile	MCDR	New signals installed
11/24/2015	666: Van Dyke (M-53) and South of 15 Mile	MCDR	New signals installed
11/24/2015	667: Van Dyke (M-53) and North of 15 Mile	MCDR	New signals installed
11/24/2015	669: Van Dyke (M-53) and South of Brougham	MCDR	New signals installed

Tracks the roadway upgrades executed in Macomb County, Including those done by other transportation agencies, also lists a description of the upgrades performed.

GovDelivery Notifications

In the month of November, the TOC sent out 32 GovDelivery notifications, and increased the number of recipients from 168 to 185 receiving notifications.



Note: The chart below only shows data for the days GovDelivery notifications were sent from the TOC.

GovDelivery is a tool to notify Macomb County motorists of any incident blocking at least one lane of traffic, or causing traffic issues. The notifications are only sent after the incident has been verified by camera, Sheriff and/or local police agencies.

 [Sign up for incident notifications on weekdays from 6 a.m. to 6 p.m. causing lane or roadway closures on major Macomb County arterials.](#)

Major Construction and Maintenance

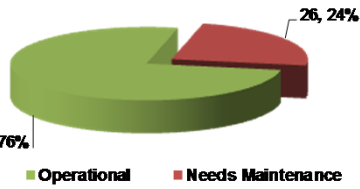
Project Parameters	Start Date	Approximate Completion Date	Location(s)
Construction	3/26/2015	To be determined	32 Mile between Powell and Romeo Plank
Construction	10/29/2014 updated 06/05/2015	To be determined	24 Mile between Schoenherr and Hayes
Construction	6/18/2015	To be determined	24 Mile between Van Dyke (M-53) and Jewell
Construction	6/18/2015	To be determined	WB 24 Mile from Brookfield to Shelby
Construction	7/6/2015	11/1/2015	EB Metro from I-94 to Jefferson
Construction	7/20/2015	5/15/2016	Metro Parkway between Groesbeck (M-97) and Gratiot (M-3)
Construction	7/30/2015	To be determined	31 Mile east of Mt. Vernon across the Stoney Creek (Bridge)
Construction	7/30/2015	To be determined	27 Mile east of Hayes across the Stoney Creek (Bridge)
Construction	8/6/2015	11/1/2015	14 Mile from Hayes to Utica
Construction	8/24/2015	12/1/2015	Archer Drive (Bridge) over channel to lake St. Clair
Construction	9/14/2015	11/1/2015	22 Mile Culvert over Clinton-Kalamazoo Canal
Construction	9/21/2015	11/1/2015	Omo Road between Armada Ridge and Armada Center
Construction	9/30/2015	11/13/2015	Cass Ave embankment repair and stabilization
Construction	11/6/2015	To be determined	Shook Road Bridge over the Clinton-Harrison Drain
Construction	11/19/2015	To be determined	Quinn Road Bridge located between Oakview and I-94

Out of the many projects that occur on Macomb County roads, these projects potentially have the most impact to motorists.

Current Camera Locations

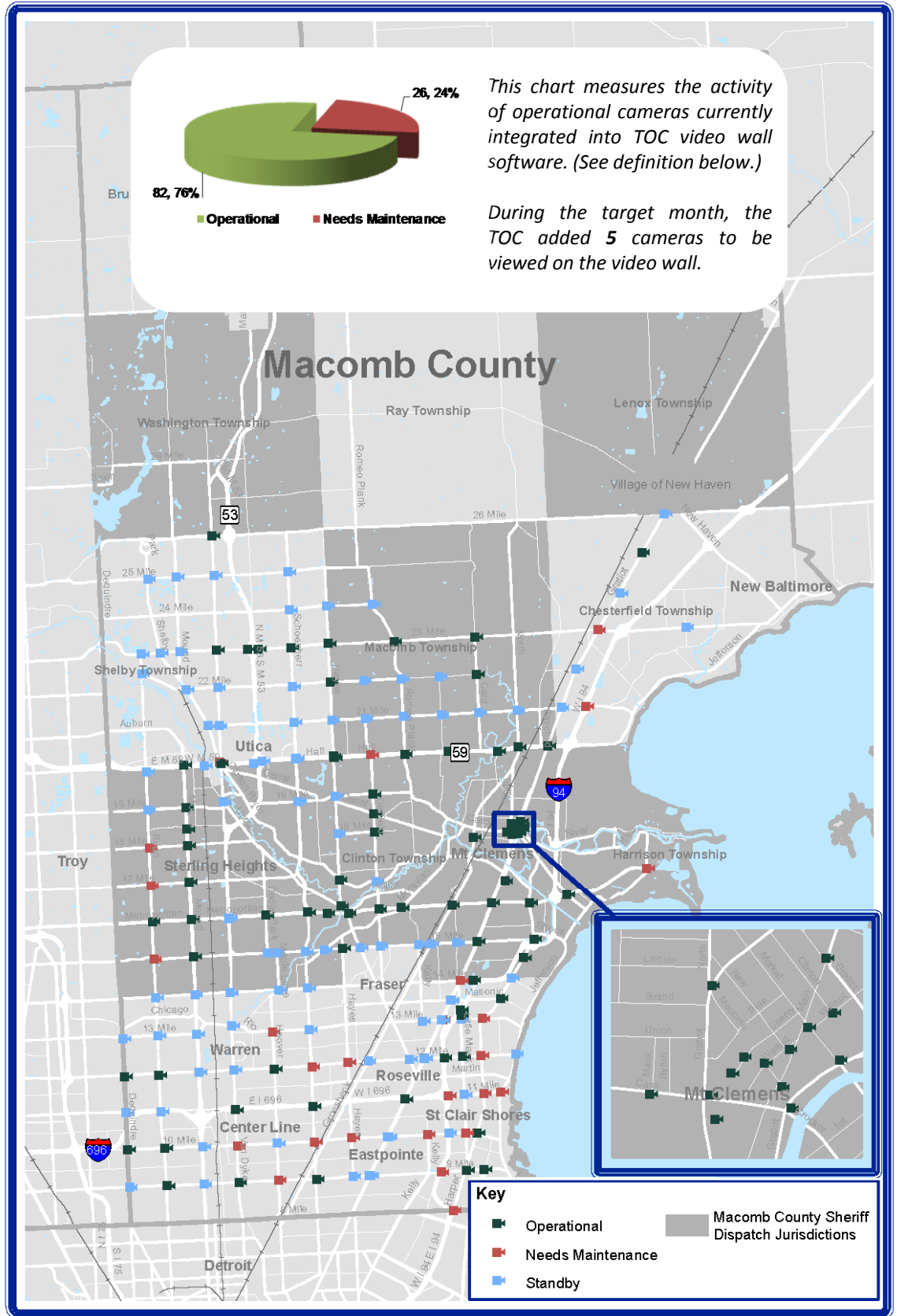
CAMERA COVERAGE

November 2015



This chart measures the activity of operational cameras currently integrated into TOC video wall software. (See definition below.)

During the target month, the TOC added 5 cameras to be viewed on the video wall.



Cameras currently deployed and under Macomb County Department of Roads jurisdiction.
 Cameras considered operational were available 90% of the target month.
 Cameras needing maintenance were available for less than 90% of the target month.
 Cameras in "Standby" have not yet been integrated into TOC video wall software.

