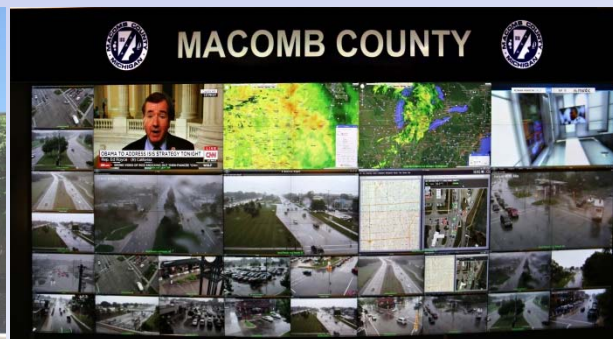


# MACOMB COUNTY DEPARTMENT OF ROADS

## TRAFFIC OPERATIONS CENTER

*"To provide and maintain a reliable real-time traffic operations system, in coordination with county stakeholders, that enables a safe, efficient, and informative travel experience."*

## PERFORMANCE MEASURES



## AUGUST 2016



**John Abraham, PhD, PE, PTOE**  
Director of Traffic & Operations  
Macomb County Department of Roads  
117 S Groesbeck Hwy  
Mount Clemens, MI 48043  
586-463-8671  
[JAbraham@RCMCWeb.org](mailto:JAbraham@RCMCWeb.org)

# INFORMATIVE TOC HIGHLIGHT

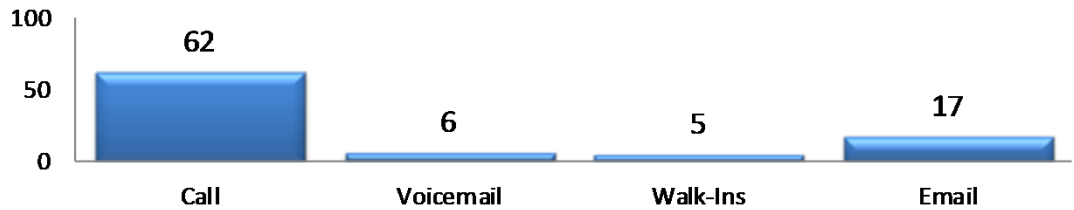
During the month of August, the TOC assisted with multiple construction projects, including the Sterling Heights Dodge Park widening project. Equipment installations and traffic signal controller adjustments were managed by TOC staff to facilitate traffic flow as the project reaches the later stages of work.

Engineers from General Motors also visited the TOC, as the county has offered to assist them in the development of connected vehicle technology to be used on and around the Tech Center campus.

Lastly, TOC staff have been developing new ways to use traffic signal infrastructure in the form of performance analytics developed by Purdue University. These new methodologies and techniques will allow engineers to have a deeper understanding of operations at a given traffic signal, and may shed light on how to make more improvements and increase the efficiency of the Macomb County traffic grid.

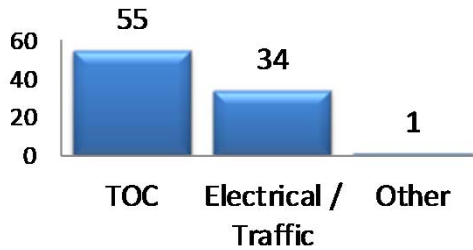
## SERVICE REQUESTS

Source



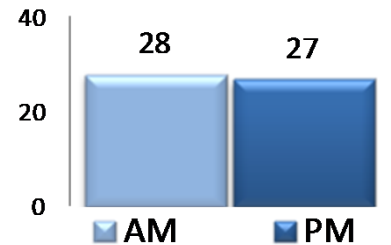
For the month of August, 90 incoming requests regarding traffic signals were received. The 'Source' chart shows how the service request was received by the TOC

Department

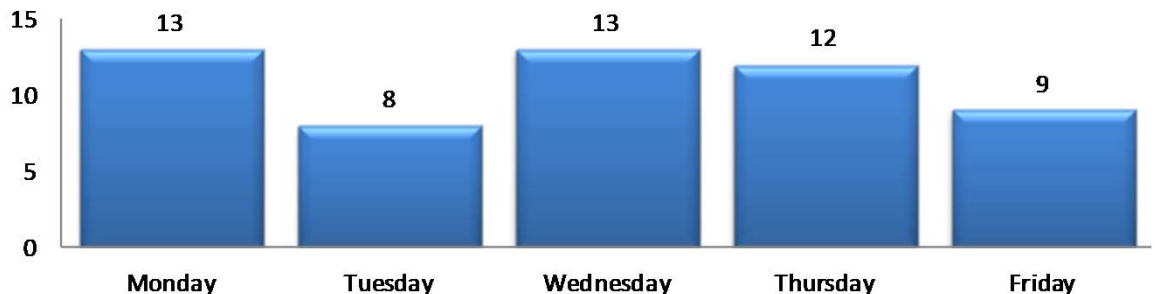


In the month of August, the TOC engineers closed 49 service request within an average of 4 business days

AM/PM Breakup



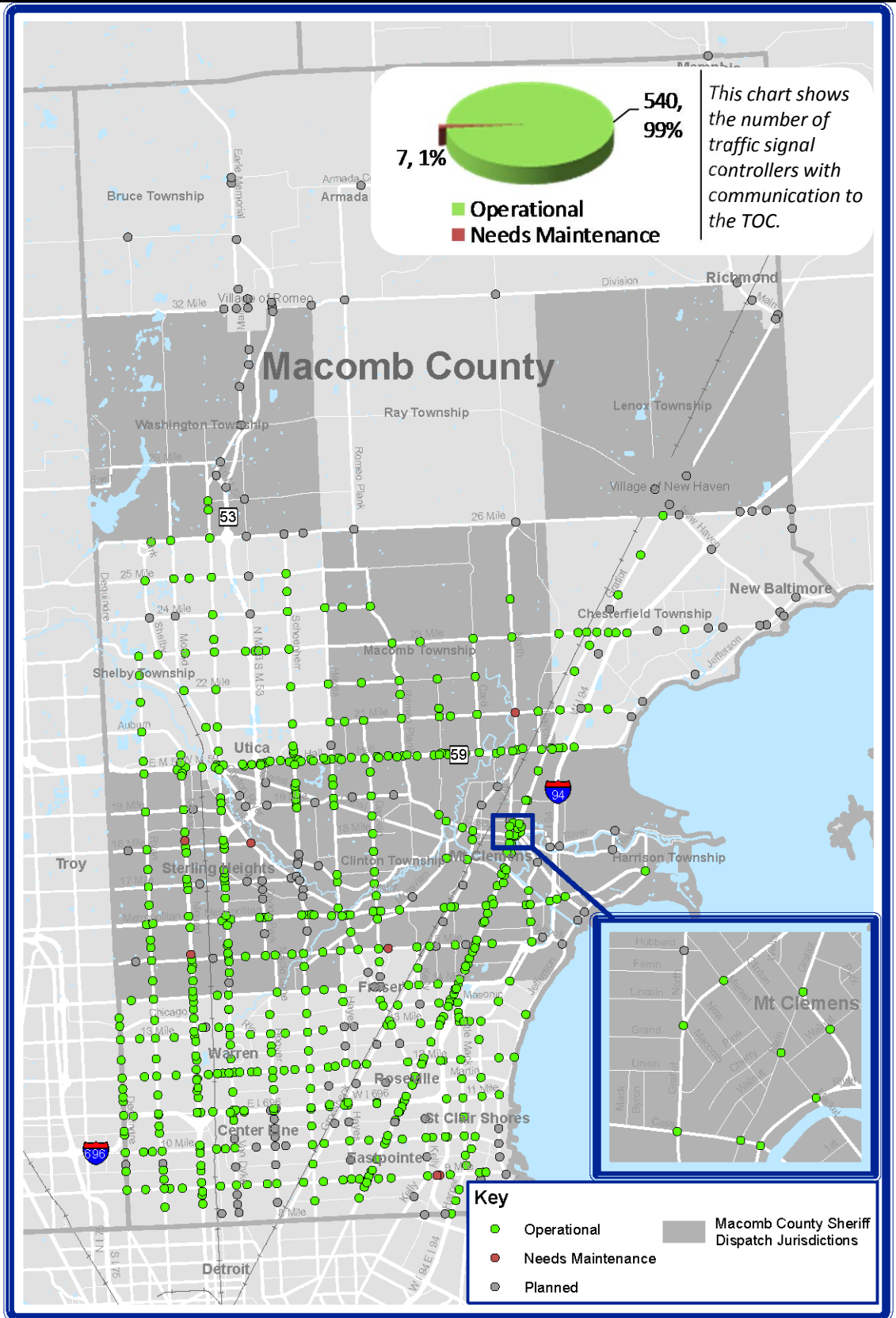
Service Request Per Day of Week



# REGIONAL COMMUNICATIONS SUMMARY

## ITS MAINTENANCE

August 2016



During the target month, the TOC added 0 intersections to our operational communications network.

Locations considered to have operational communications are shown in green, while locations found not to have operational communications due to needed maintenance at the time of the snapshot are shown in red. Locations that are "Planned" have not yet been integrated into TOC network.



# COUNTY CORRIDOR COMMUNICATIONS AVAILABILITY

Corridor	Current Month	Previous Month	Change
9 Mile	93%	97%	-4%
14 Mile	100%	100%	0%
15 Mile	100%	89%	11%
Metro Parkway	100%	97%	3%
Hall (M-59)	100%	100%	0%
Dequindre	100%	92%	8%
Ryan	100%	100%	0%
Mound	98%	100%	-2%
Hoover	100%	100%	0%
Schoenherr	100%	100%	0%
Hayes	100%	100%	0%
Gratiot (M-3)	100%	100%	0%
Harper	100%	100%	0%

The table above represents a one-time monthly snapshot of communications along major corridors in Macomb County. Corridors which are considered to have operational communications (90% and above) are shown in green, while corridors found not to have operational communications (<90%) at the time of the snapshot are shown in red.

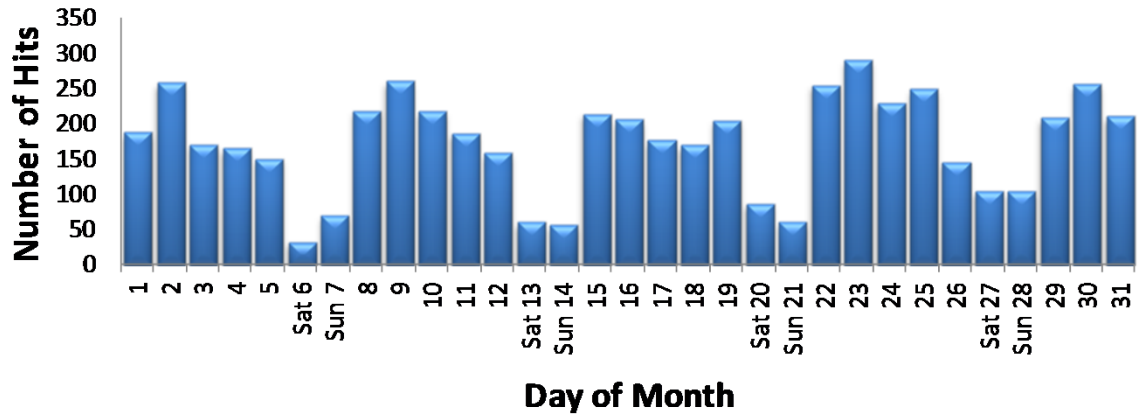
## EXECUTED TRAFFIC SIGNAL UPGRADES

August	Location	Upgrade
26	Dodge Park at Plumbrook	New signal install
26	Dodge Park at 16 1/2 Mile	New signal install

Tracks the roadway upgrades executed in Macomb County, including those done by other transportation agencies, also lists a description of the upgrades performed.

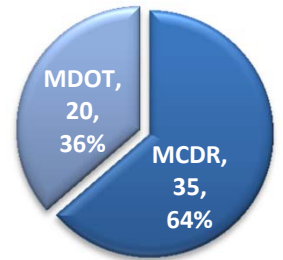
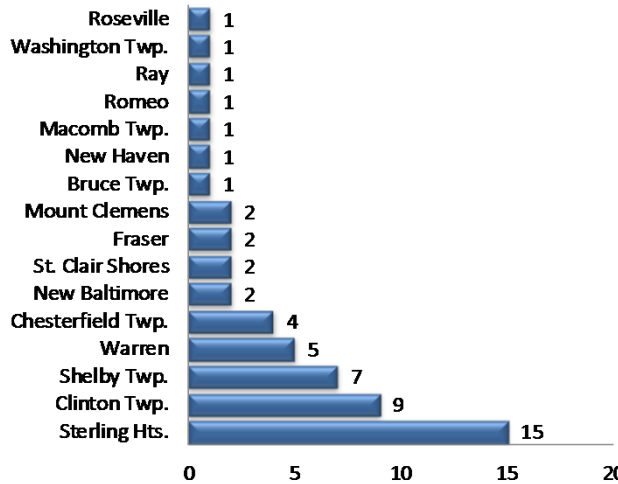


## MCDR WEBSITE HITS



A total of 5,386 hits were accrued at <http://roads.macombgov.org/>

## SERVICE REQUESTS PER MUNICIPALITY

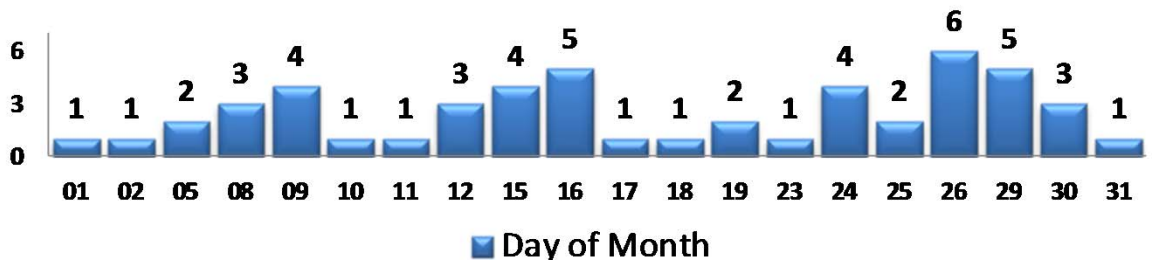


The chart to the left shows how many requests were created per traffic signal location under municipality jurisdiction and the chart to the right shows breakdown of the requests created under MDOT or MCDR / local municipality jurisdiction.

## GOVDELIVERY NOTIFICATIONS

In the month of August, the TOC sent out 51 GovDelivery notifications, and increased the number of recipients from 314 to 334 receiving notifications.

Note: The chart below only shows data for the days GovDelivery notifications were sent from the TOC.



GovDelivery is a tool to notify Macomb County motorists of any incident blocking at least one lane of traffic, or causing traffic issues. The notifications are only sent after the incident has been verified

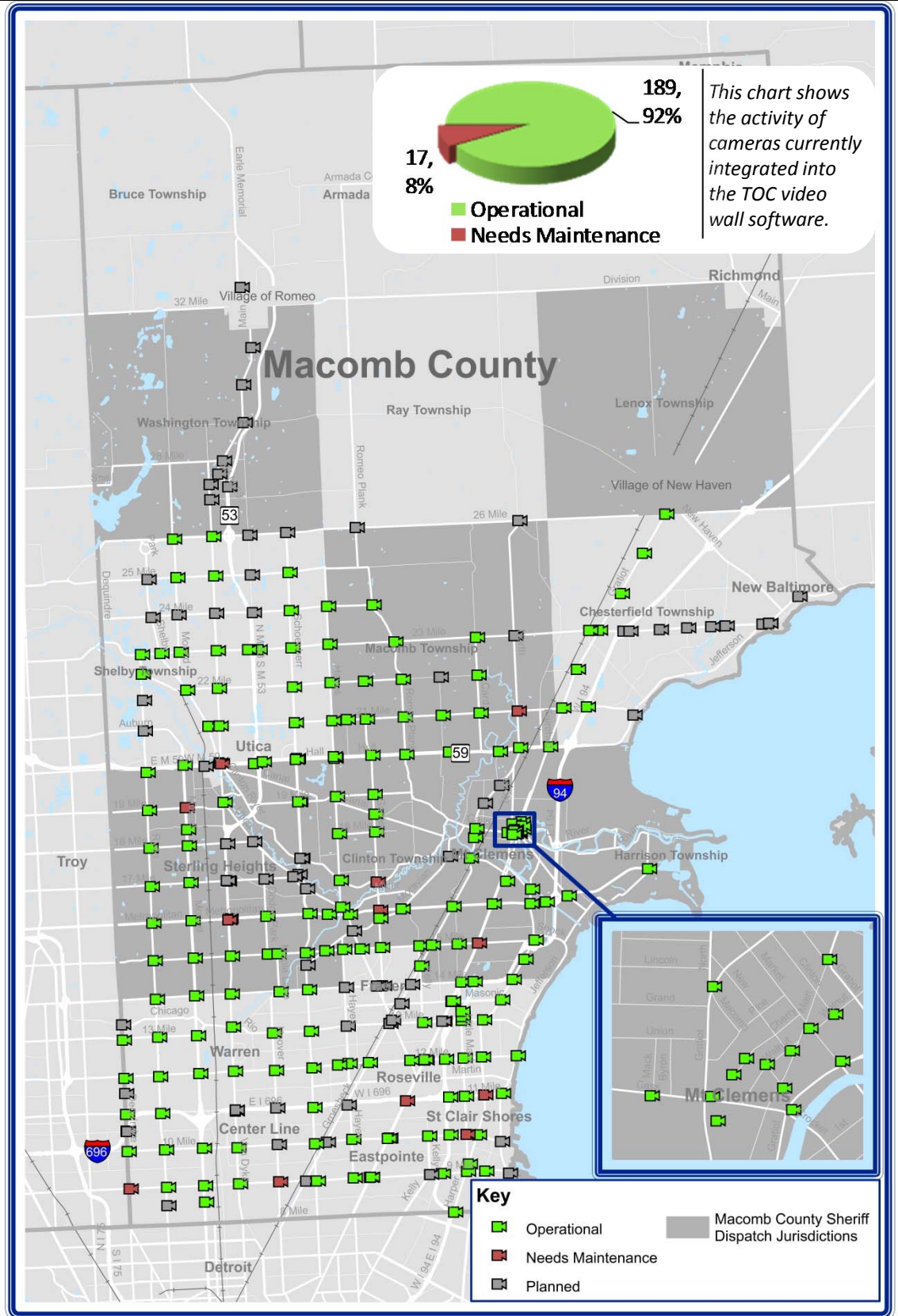
[Sign up for incident notifications on weekdays from 6 a.m. to 6 p.m. causing lane or roadway closures on major Macomb County arterials.](#)



# CURRENT CAMERA LOCATIONS

## CAMERA COVERAGE

August 2016



**During the target month, the TOC added 0 cameras to be viewed on the video wall.**

Cameras considered to have operational communications are shown in **green**, while cameras found not to have operational communications due to needed maintenance at the time of the snapshot are shown in **red**. Cameras that are "Planned" have not yet been integrated into TOC video wall software.

