

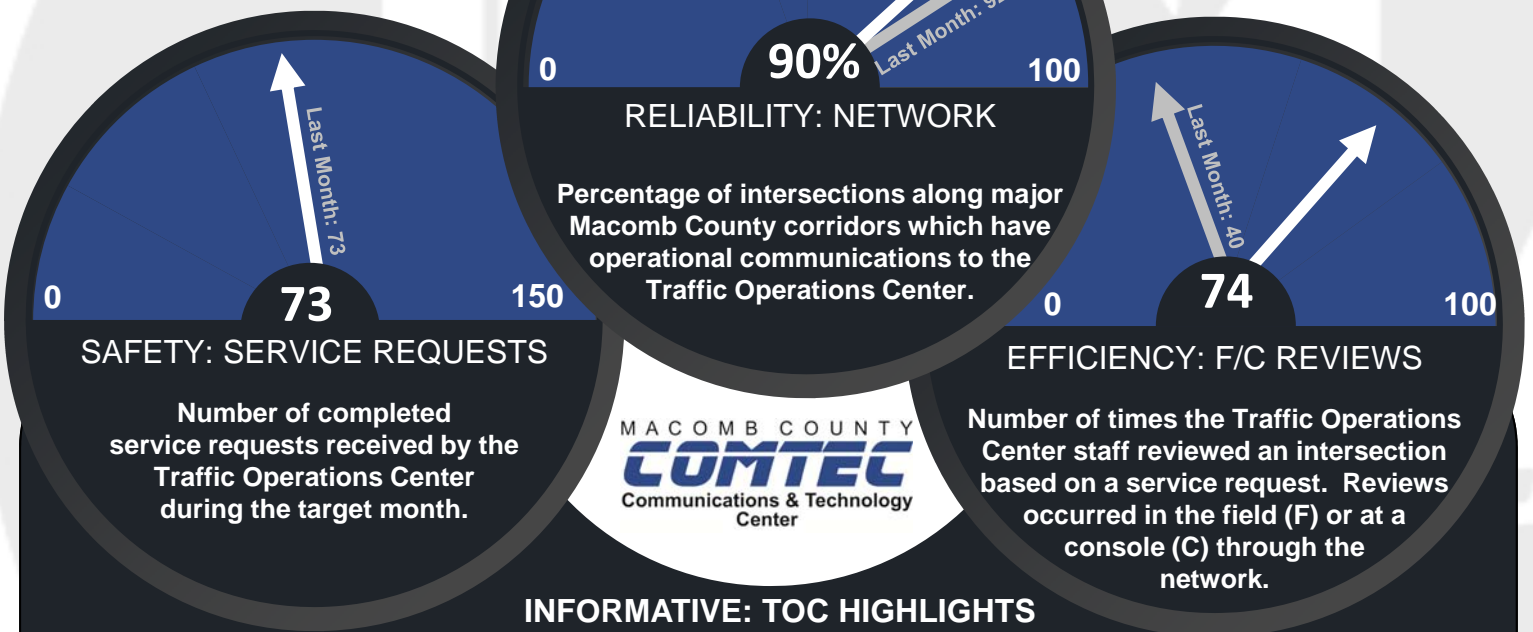
# MACOMB COUNTY DEPARTMENT OF ROADS

## TRAFFIC OPERATIONS CENTER

"To provide and maintain a reliable real-time traffic operations system, in coordination with county stakeholders, that enables a safe, efficient, and informative travel experience."

### PERFORMANCE MEASURES

MAY  
2016



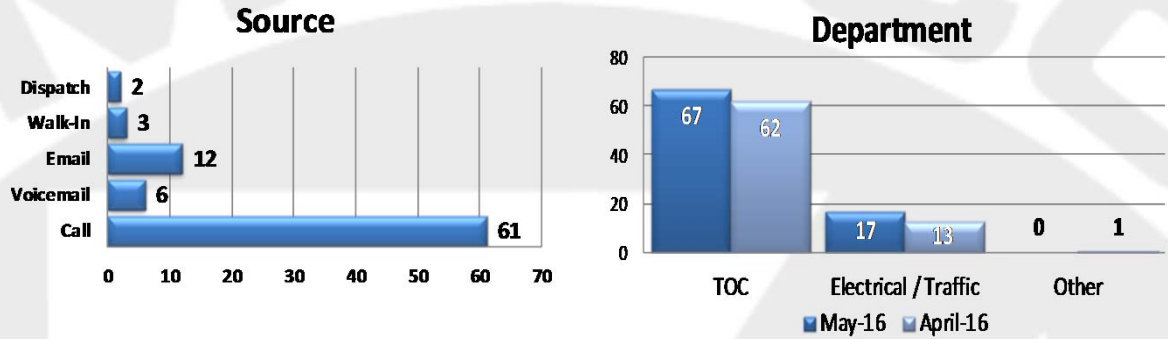
May was a busy month for the Macomb County Department of Roads (MCDR) Traffic Operations Center (TOC). Construction season is now in full swing, with several projects around the county ramping up or commencing for the summer construction season. TOC staff worked with MCDR Traffic inspectors to successfully conduct several traffic switches on some of the projects around the county.

As well, TOC staff worked with consultants from Kimley-Horn and Associates to implement the latest contingency timing plans on the corridors of Schoenherr, Mound, and 15 Mile Road. These contingency timings allow the TOC to easily implement a timing adjustment as a response to an incident at a given intersection without interrupting coordination through the area. TOC staff also worked in conjunction with Michigan Department of Transportation staff as well as General Motors staff on the beginning stages of coordination for testing Connected Vehicle technology.

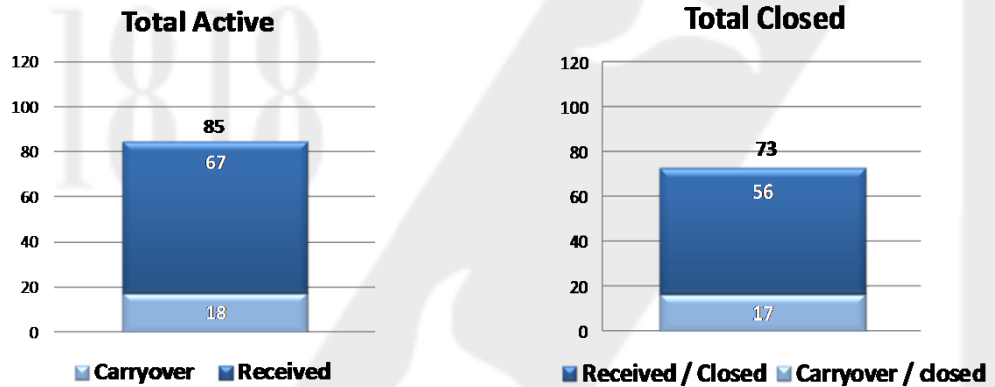


**John Abraham, PhD, PE, PTOE**  
Director of Traffic & Operations  
Macomb County Department of Roads  
117 S Groesbeck Hwy  
Mount Clemens, MI 48043  
586-463-8671  
[JAbraham@RCMCWeb.org](mailto:JAbraham@RCMCWeb.org)

## Service Requests

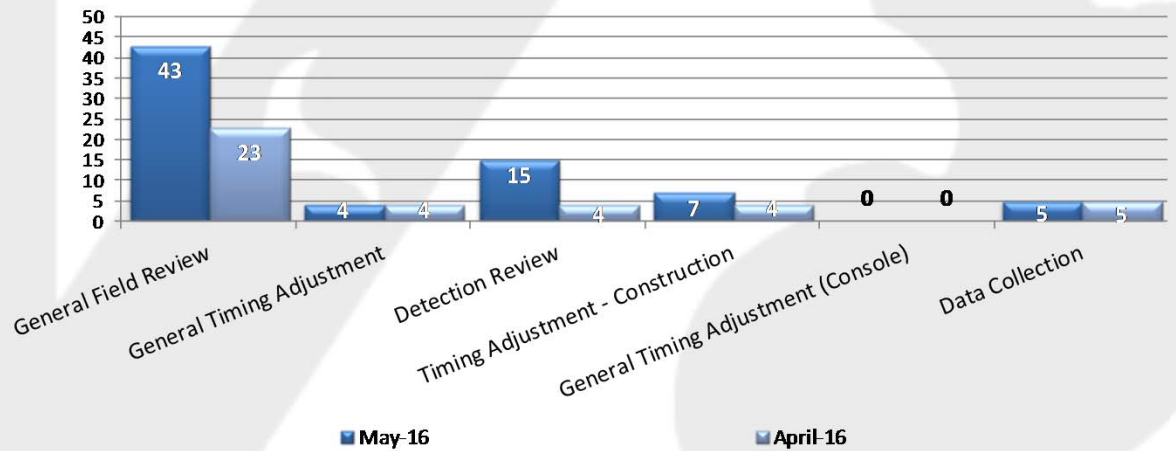


For the month of May, 84 incoming requests regarding traffic signals were received. The 'Source' chart shows how the service request was received by the TOC. The 'Department' chart shows the group handling the service request. The 'Other' category indicates where TOC staff helped filter a request to another agency.



At the end of May, 12 service requests will carry over into June 2016.

## Field/Console Reviews Completed

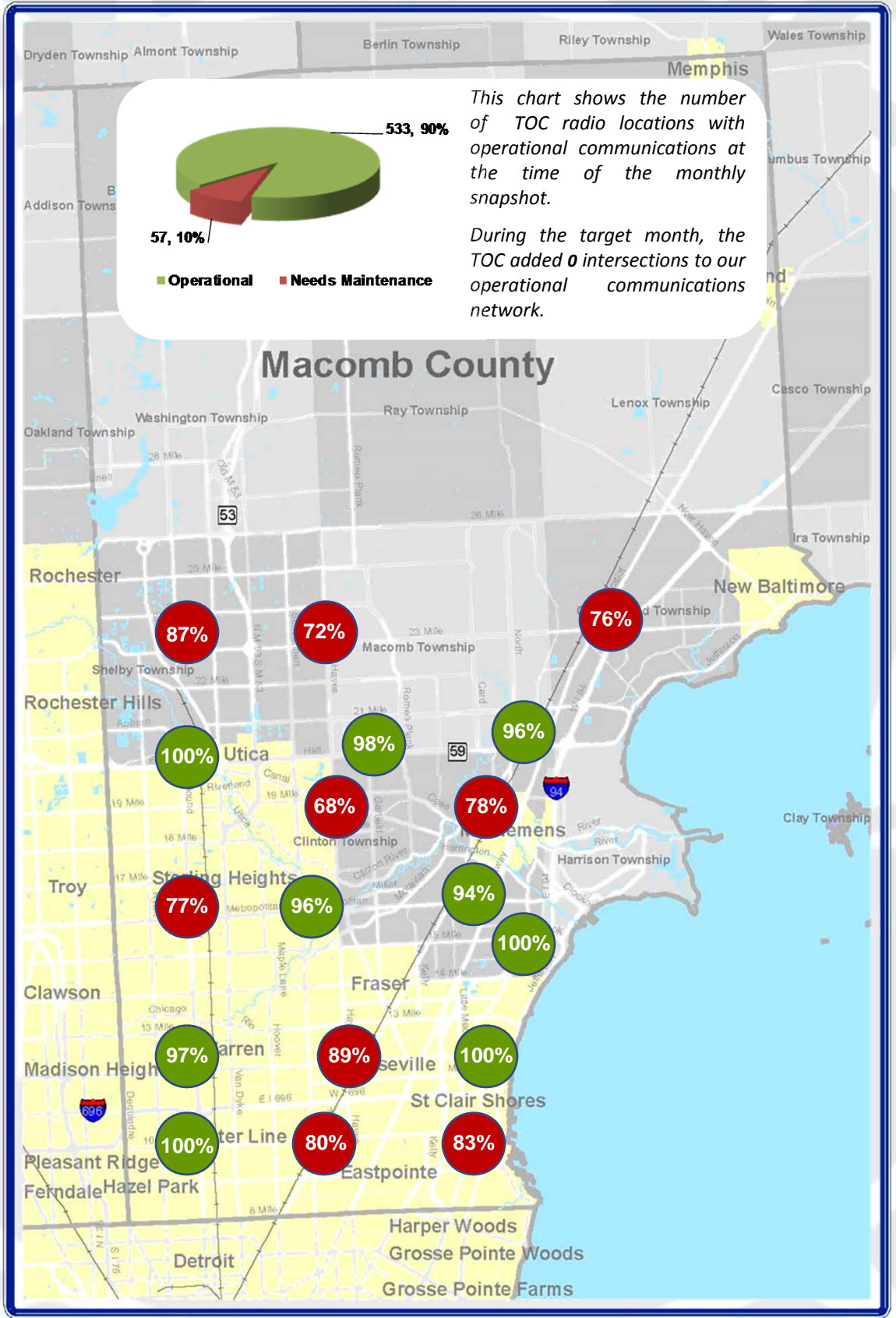


Compilation of the general field/console review types completed by the Traffic Operations Engineers. Field/console reviews are assigned after a public/stakeholder concern warrants an investigation. Reviews are either conducted in the field or at an Operator console through a network connection.

# Regional Communications Summary

ITS MAINTENANCE

MAY 2016



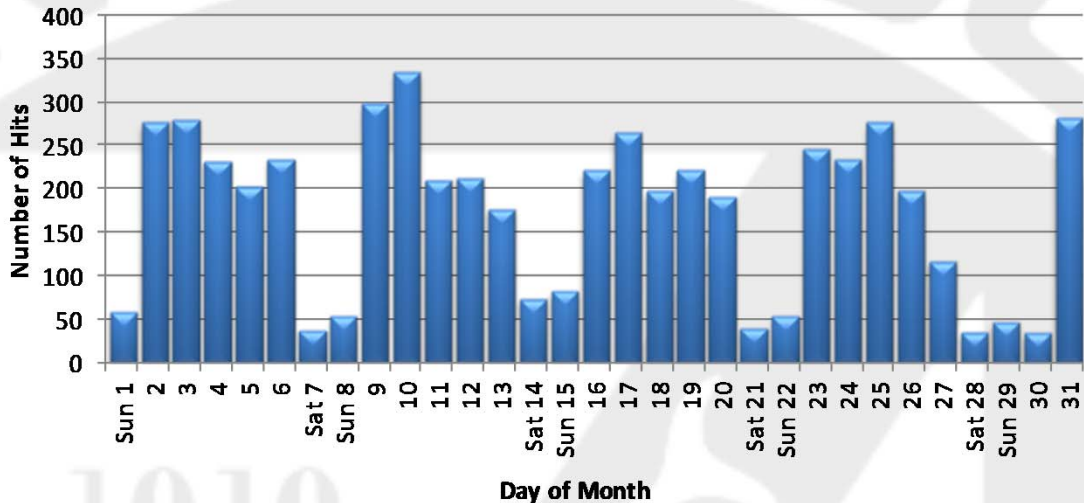
This chart shows the number of TOC radio locations with operational communications at the time of the monthly snapshot.

During the target month, the TOC added 0 intersections to our operational communications network.

Macomb County maintains 18 communications hubs which transmit data between the Traffic Operations Center and regions of traffic signal controllers across the County. The numbers above represent a one-time monthly snapshot of operational communication to each region. Regions considered to have operational communications (90% or above) are shown in green, while regions found not to have operational communications (<90%) at the time of the snapshot are shown in red.



## MCDR Website Hits



Combined website hits accrued at the <http://www.rcmcweb.org/> and the new <http://roads.macombgov.org/>.

## County Corridor Communications Availability

Corridor	Current Month	Previous Month	Change
9 Mile	100%	100%	0%
10 Mile	80%	100%	-20%
I-696 Service Drive	100%	100%	0%
12 Mile	97%	100%	-3%
14 Mile	100%	92%	8%
15 Mile	100%	94%	6%
Metro Parkway	100%	100%	0%
Hall (M-59)	98%	98%	0%
Dequindre	100%	100%	0%
Ryan	100%	100%	0%
Mound	100%	100%	0%
Hoover	100%	100%	0%
Schoenherr	100%	100%	0%
Hayes	100%	100%	0%
Gratiot (M-3)	100%	100%	0%
Harper	100%	100%	0%

The table above represents a one-time monthly snapshot of communications along major corridors in Macomb County. Corridors which are considered to have operational communications (90% and above) are shown in green, while corridors found not to have operational communications (<90%) at the time of the snapshot are shown in red.

## Executed Roadway Upgrades

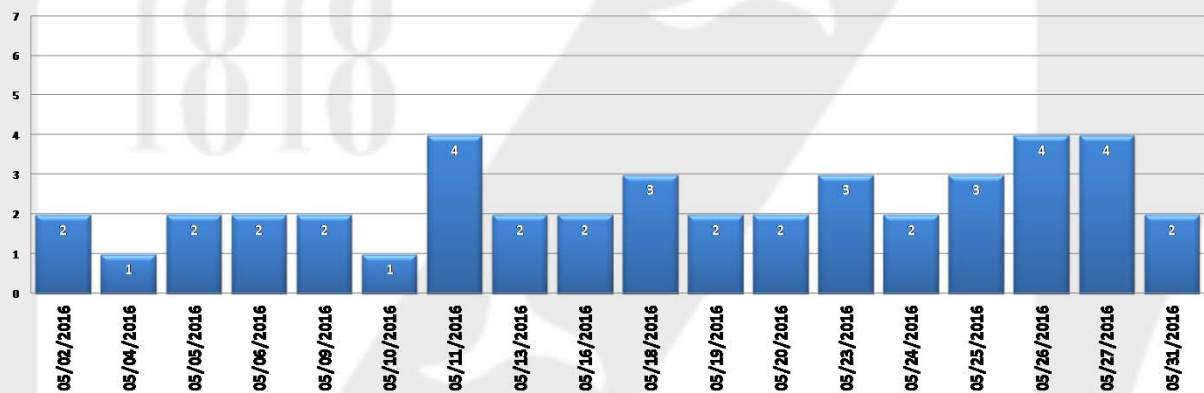
Date	Location	Organization	Upgrade
05/02/2016	949: 22 Mile at Garfield	MCDR	NB Signal heads-Arrows removed
05/15/2016	010: 12 Mile at Mound	MCDR	ARC signal timings implemented
05/18/2016	042: 15 Mile at Mound	MCDR	ARC signal timings implemented
05/18/2016	307: 12 Mile at Schoenherr	MCDR	ARC signal timings implemented

Tracks the roadway upgrades executed in Macomb County, including those done by other transportation agencies, also lists a description of the upgrades performed.

## GovDelivery Notifications

In the month of May, the TOC sent out 43 GovDelivery notifications, and increased the number of recipients from 277 to 298 receiving notifications.

Note: The chart below only shows data for the days GovDelivery notifications were sent from the TOC.



GovDelivery is a tool to notify Macomb County motorists of any incident blocking at least one lane of traffic, or causing traffic issues. The notifications are only sent after the incident has been verified by camera, Sheriff and/or local police agencies.

 [Sign up for incident notifications on weekdays from 6 a.m. to 6 p.m. causing lane or roadway closures on major Macomb County arterials.](#)

## Major Construction and Maintenance

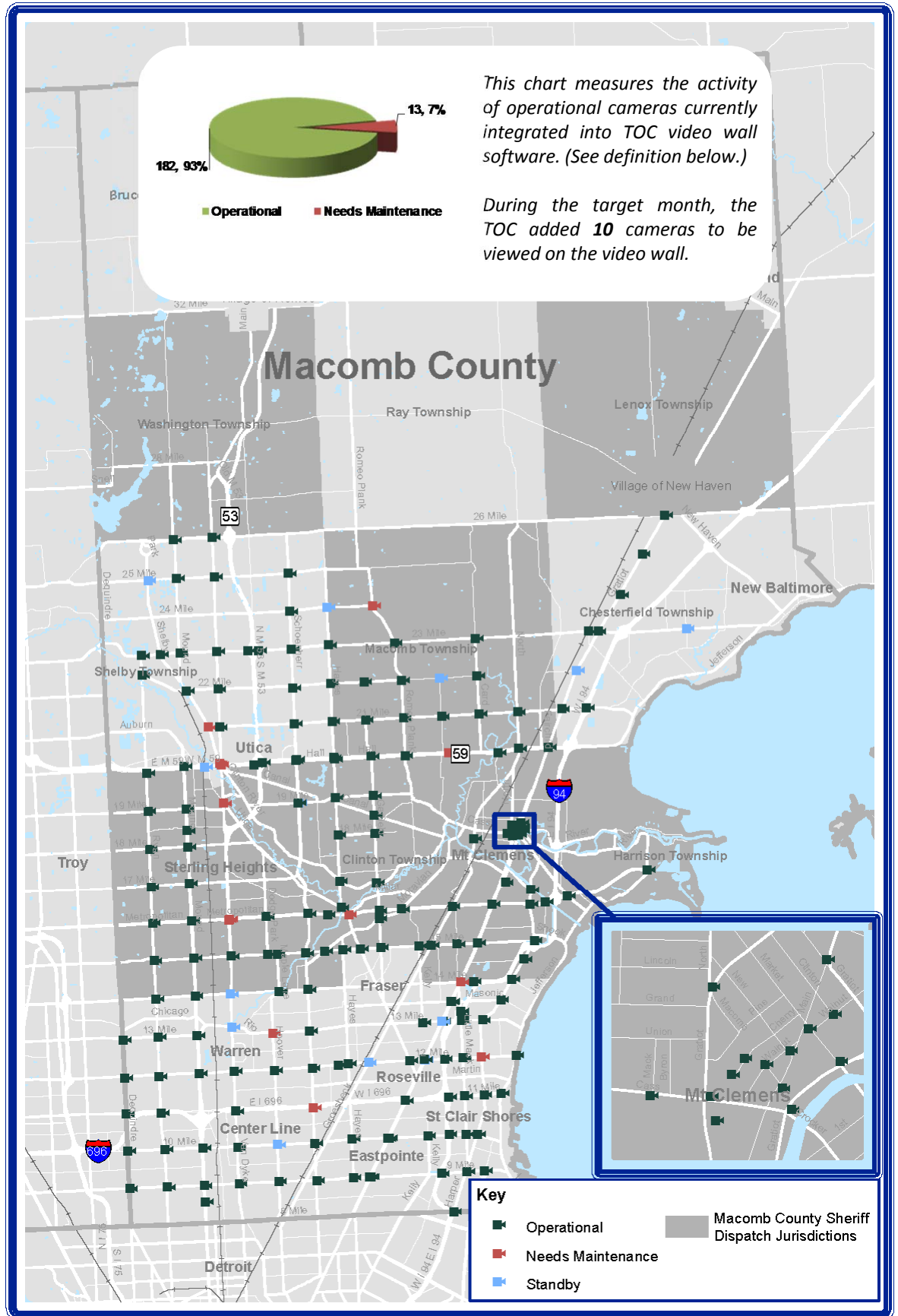
Project Parameters	Start Date	Approximate Completion Date	Location(s)
Construction	03/26/2015	To be determined	32 Mile between Powell and Romeo Plank
Construction	06/18/2015	To be determined	24 Mile between Van Dyke (M-53) and Jewell
Construction	06/18/2015	To be determined	WB 24 Mile from Brookfield to Shelby
Construction	07/20/2015	05/15/2016	Metro Parkway between Groesbeck (M-97) and Gratiot (M-3)
Construction	07/30/2015	To be determined	31 Mile East of Mt. Vernon across the Stoney Creek (Bridge)
Construction	07/30/2015	To be determined	27 Mile East of Hayes across the Stoney Creek (Bridge)
Construction	11/06/2015	To be determined	Shook Bridge over the Clinton-Harrison Drain
Construction	11/19/2015	To be determined	Quinn Bridge located between Oakview and I-94
Construction	02/09/2016	05/27/2016	27 Mile over Price Brook Drain, 300ft east of Hayes
Construction	03/03/2016	09/01/2016	Charter Oaks and adjacent subdivision roads
Construction	03/20/2016	06/03/2016	Lakeshore Bridge (North) over Channel to Lake St. Clair
Construction	04/01/2016	07/01/2016	Executive from Henry B. Joy to Production
Construction	04/11/2016	07/28/2016	Chapman over Deer Creek Bridge Replace
Construction	05/02/2016	08/02/2016	32 Mile from old Van Dyke to M-53, Romeo
Construction	05/02/2016	08/12/2016	12 Mile from Ryan to Mound
Construction	05/09/2016	08/01/2016	Van Dyke from West to Campground

Out of the many projects that occur on Macomb County roads, these projects potentially have the most impact to motorists.

# Current Camera Locations

# CAMERA COVERAGE

MAY 2016



Cameras currently deployed and under Macomb County Department of Roads jurisdiction. Cameras in "Standby" have not yet been integrated into TOC video wall software.

