

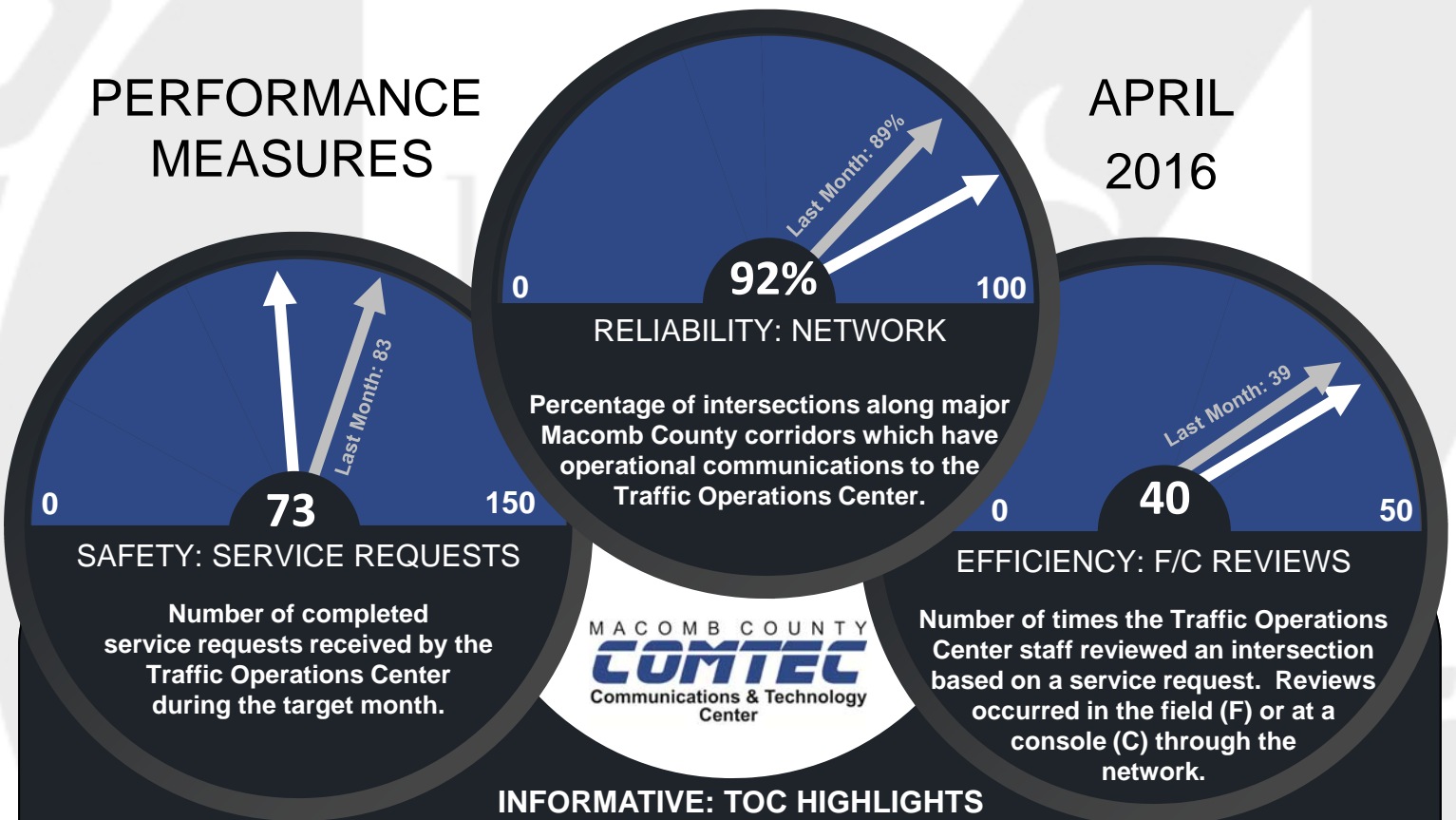
MACOMB COUNTY DEPARTMENT OF ROADS

TRAFFIC OPERATIONS CENTER

"To provide and maintain a reliable real-time traffic operations system, in coordination with county stakeholders, that enables a safe, efficient, and informative travel experience."

PERFORMANCE MEASURES

APRIL
2016



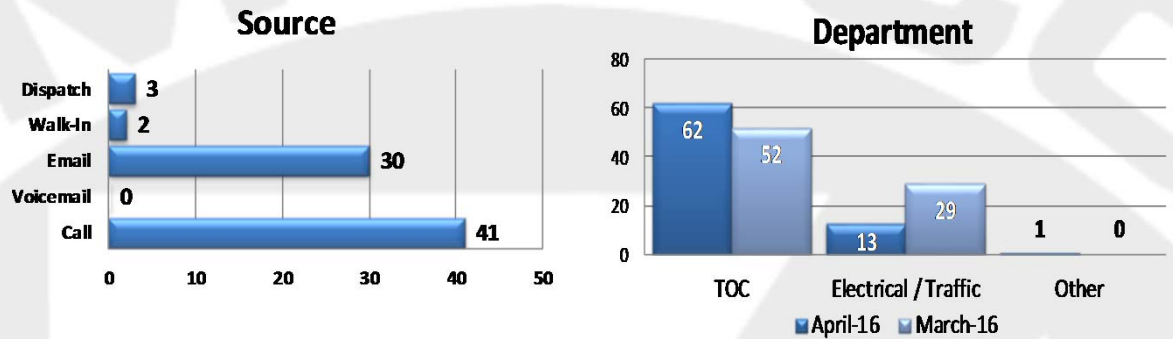
INFORMATIVE: TOC HIGHLIGHTS

The month of April was productive for the Macomb County Department of Roads (MCDR) Traffic Operations Center (TOC). With the onset of construction season, TOC engineers have begun helping the MCDR Traffic and Electrical departments with in-field traffic staging and lane shifts and monitoring construction sites to adjust for congestion as traffic patterns shift. The traffic department's 18 location improvements project is progressing, with many traffic equipment upgrades and signal modernization work approaching shortly. In addition to construction, the TOC engineers embarked on the Corridor of Significance project to better analyze operations along Van Dyke Avenue (M-53) through Sterling Heights and Warren. TOC engineers worked closely with Michigan Department of Transportation (MDOT) engineers from Lansing and have established a baseline of travel-time information to better evaluate the corridor from 8 Mile to 18 ½ Mile. In addition, several equipment and signal timing changes have been executed to improve operations along the corridor. Pedestrian movements have been monitored using MCDR's communications network to bring information back to the TOC for further analysis. This project is ongoing, and the TOC is excited to continue improving the motorist's experience along the Van Dyke corridor.

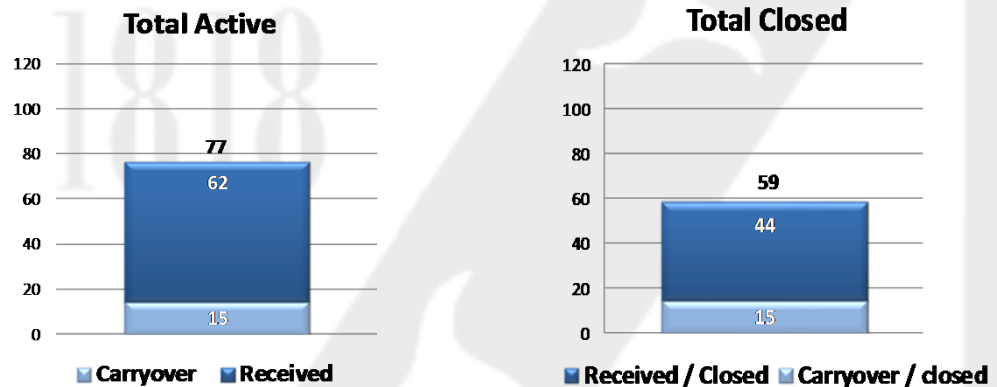


John Abraham, PhD, PE, PTOE
Director of Traffic & Operations
Macomb County Department of Roads
117 S Groesbeck Hwy
Mount Clemens, MI 48043
586-463-8671
JAbraham@RCMCWeb.org

Service Requests

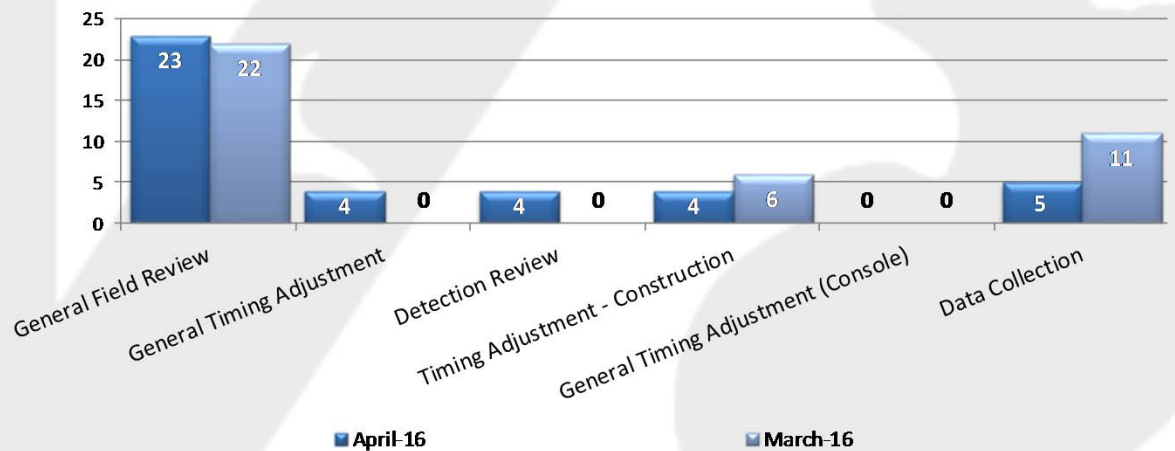


For the month of April, 76 incoming requests regarding traffic signals were received. The 'Source' chart shows how the service request was received by the TOC. The 'Department' chart shows the group handling the service request. The 'Other' category indicates where TOC staff helped filter a request to another agency.



At the end of April, 15 service requests will carry over into May 2016.

Field/Console Reviews Completed

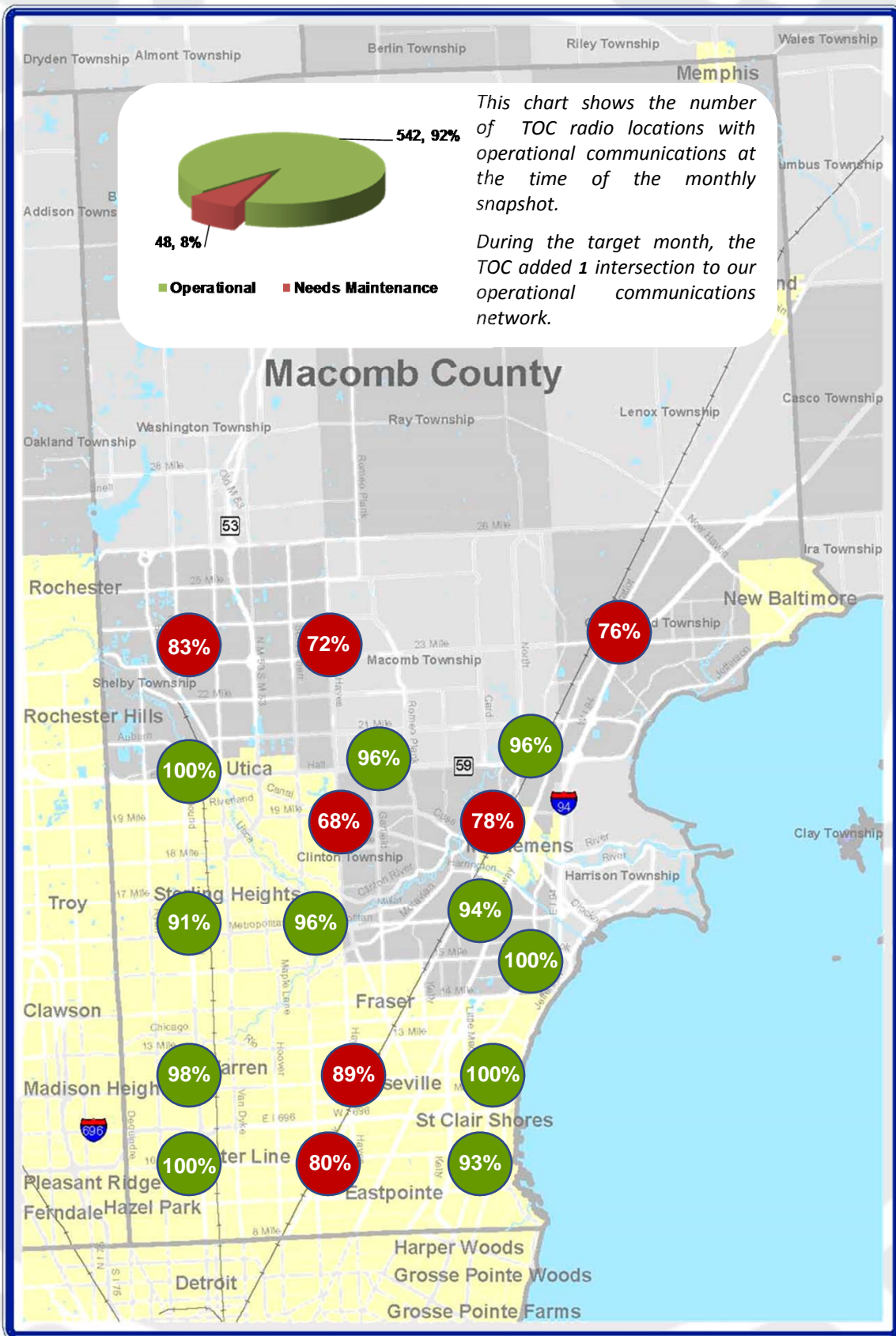


Compilation of the general field/console review types completed by the Traffic Operations Engineers. Field/console reviews are assigned after a public/stakeholder concern warrants an investigation. Reviews are either conducted in the field or at an Operator console through a network connection.

Regional Communications Summary

ITS MAINTENANCE

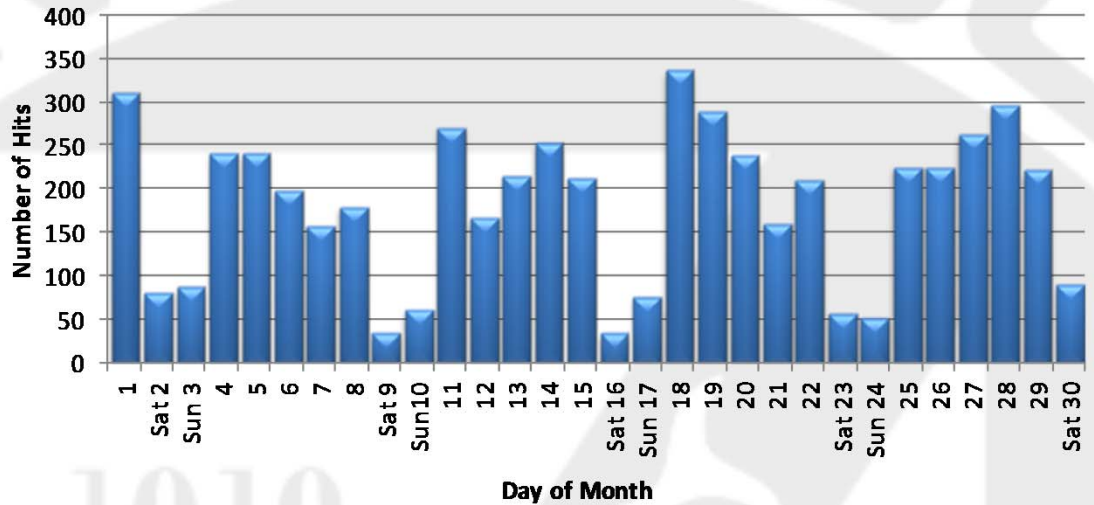
APRIL 2016



Macomb County maintains 18 communications hubs which transmit data between the Traffic Operations Center and regions of traffic signal controllers across the County. The numbers above represent a one-time monthly snapshot of operational communication to each region. Regions considered to have operational communications (90% or above) are shown in green, while regions found not to have operational communications (<90%) at the time of the snapshot are shown in red.



MCDR Website Hits



Combined website hits accrued at the <http://www.rcmcweb.org/> and the new <http://roads.macombgov.org/>.

County Corridor Communications Availability

Corridor	Current Month	Previous Month	Change
9 Mile	100%	100%	0%
10 Mile	100%	100%	0%
I-696 Service Drive	100%	100%	0%
12 Mile	100%	100%	0%
14 Mile	92%	100%	-8%
15 Mile	94%	100%	-6%
Metro Parkway	100%	100%	0%
Hall (M-59)	98%	98%	0%
Dequindre	100%	100%	0%
Ryan	100%	100%	0%
Mound	100%	100%	0%
Hoover	100%	100%	0%
Schoenherr	100%	100%	0%
Hayes	100%	100%	0%
Gratiot (M-3)	100%	95%	5%
Harper	100%	100%	0%

The table above represents a one-time monthly snapshot of communications along major corridors in Macomb County. Corridors which are considered to have operational communications (90% and above) are shown in green, while corridors found not to have operational communications (<90%) at the time of the snapshot are shown in red.

Executed Roadway Upgrades

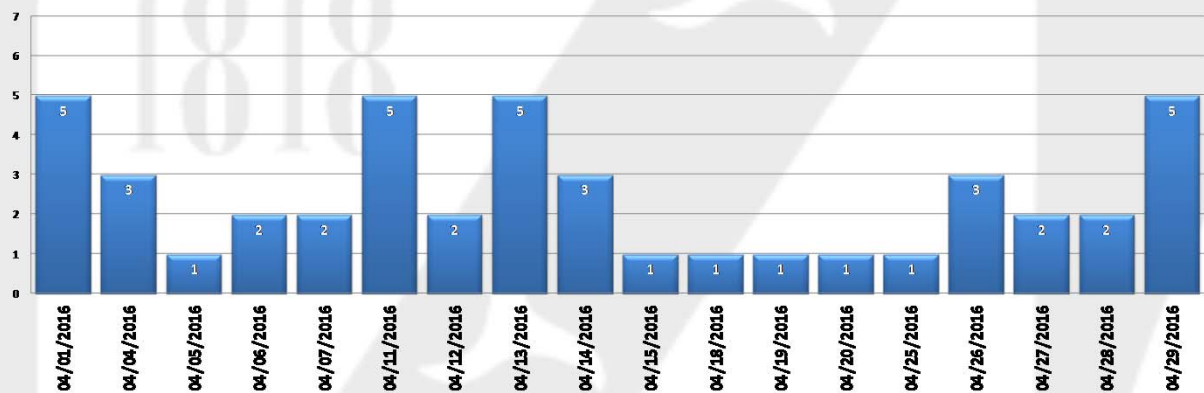
Date	Location	Organization	Upgrade
No executed roadway upgrades occurred during April 2016.			

Tracks the roadway upgrades executed in Macomb County, including those done by other transportation agencies, also lists a description of the upgrades performed.

GovDelivery Notifications

In the month of April, the TOC sent out 45 GovDelivery notifications, and increased the number of recipients from 266 to 277 receiving notifications.

Note: The chart below only shows data for the days GovDelivery notifications were sent from the TOC.



GovDelivery is a tool to notify Macomb County motorists of any incident blocking at least one lane of traffic, or causing traffic issues. The notifications are only sent after the incident has been verified by camera, Sheriff and/or local police agencies.

 [Sign up for incident notifications on weekdays from 6 a.m. to 6 p.m. causing lane or roadway closures on major Macomb County arterials.](#)

Major Construction and Maintenance

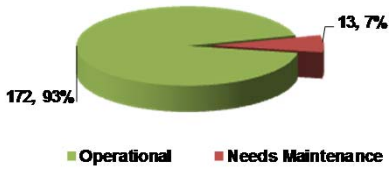
Project Parameters	Start Date	Approximate Completion Date	Location(s)
Construction	03/26/2015	To be determined	32 Mile between Powell and Romeo Plank
Construction	06/18/2015	To be determined	24 Mile between Van Dyke (M-53) and Jewell
Construction	06/18/2015	To be determined	WB 24 Mile from Brookfield to Shelby
Construction	07/20/2015	05/15/2016	Metro Parkway between Groesbeck (M-97) and Gratiot (M-3)
Construction	07/30/2015	To be determined	31 Mile east of Mt. Vernon across the Stoney Creek (Bridge)
Construction	07/30/2015	To be determined	27 Mile east of Hayes across the Stoney Creek (Bridge)
Construction	11/06/2015	To be determined	Shook Road Bridge over the Clinton-Harrison Drain
Construction	11/19/2015	To be determined	Quinn Road Bridge located between Oakview and I-94
Construction	02/09/2016	04/29/2016	27 Mile Road over Price Brook Drain, 300ft east of Hayes Rd.
Construction	03/20/2016	06/03/2016	Lakeshore Drive Bridge (North) over Channel to Lake St. Clair.
Construction	03/23/2016	04/29/2016	Jefferson Ave Bridge Rehabilitation over the Clinton River Spill

Out of the many projects that occur on Macomb County roads, these projects potentially have the most impact to motorists.

Current Camera Locations

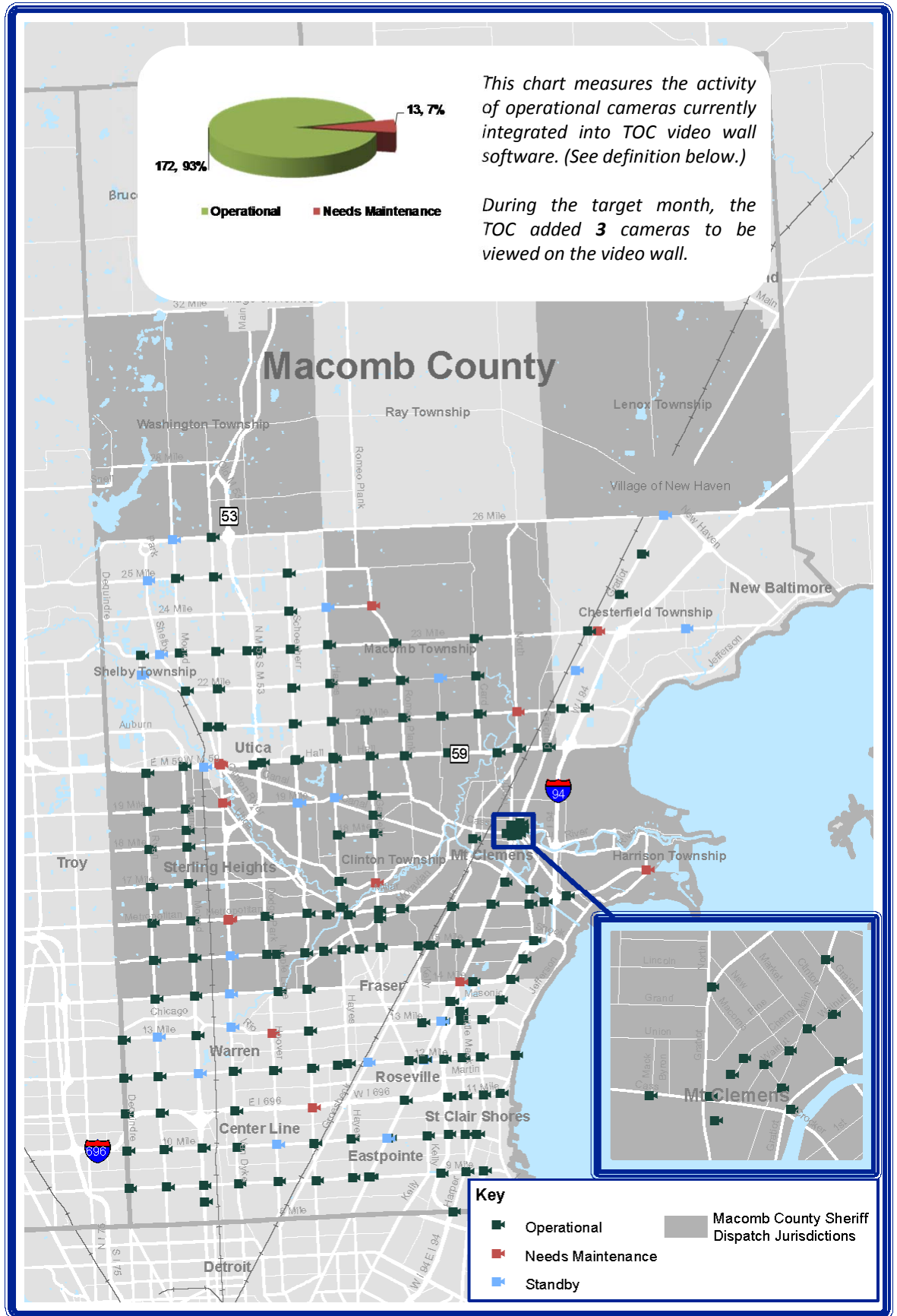
CAMERA COVERAGE

APRIL 2016



This chart measures the activity of operational cameras currently integrated into TOC video wall software. (See definition below.)

During the target month, the TOC added 3 cameras to be viewed on the video wall.



Cameras currently deployed and under Macomb County Department of Roads jurisdiction. Cameras in "Standby" have not yet been integrated into TOC video wall software.

