

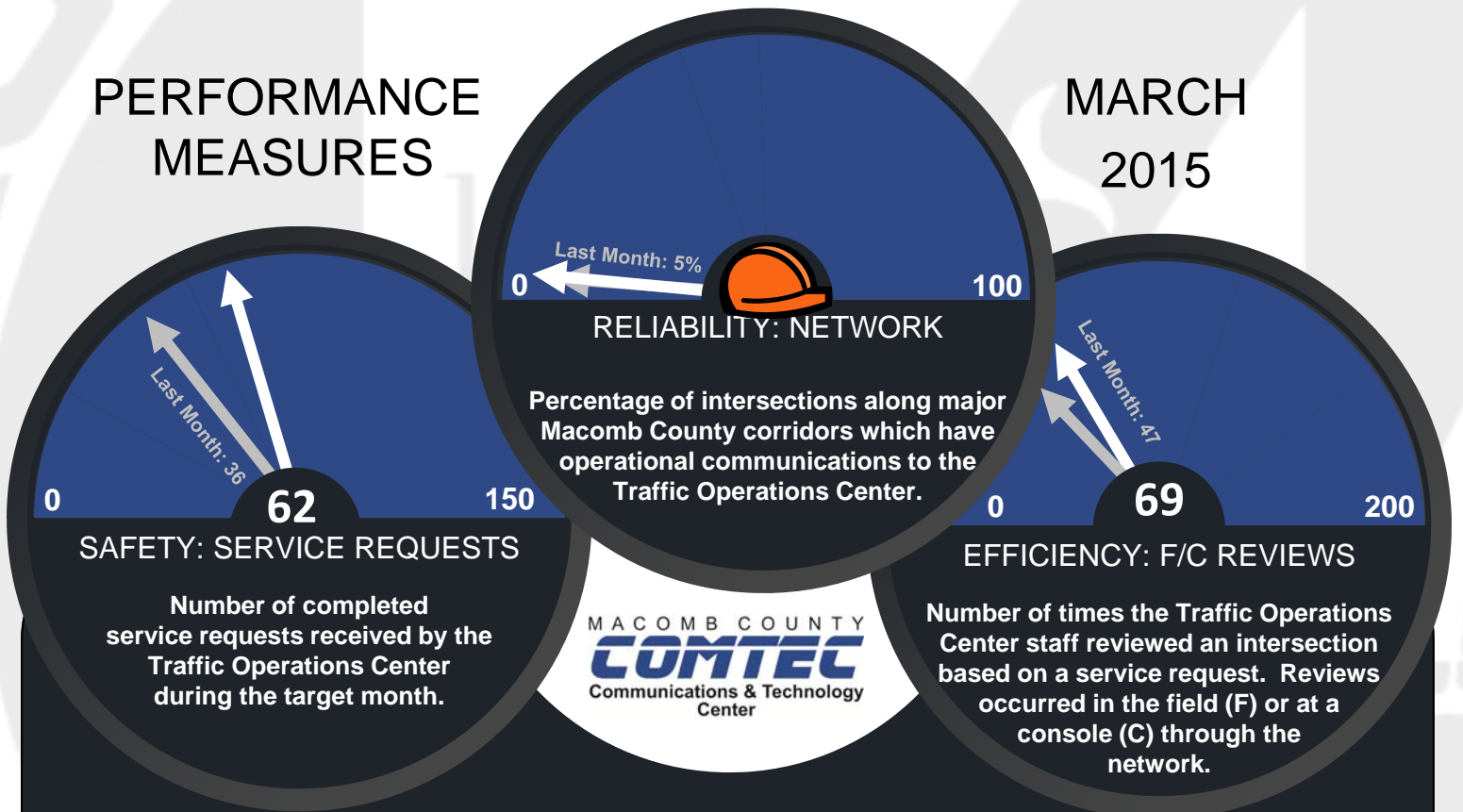
# MACOMB COUNTY DEPARTMENT OF ROADS

## TRAFFIC OPERATIONS CENTER

"To provide and maintain a reliable real-time traffic operations system, in coordination with county stakeholders, that enables a safe, efficient, and informative travel experience."

### PERFORMANCE MEASURES

### MARCH 2015



### INFORMATIVE: TOC HIGHLIGHTS



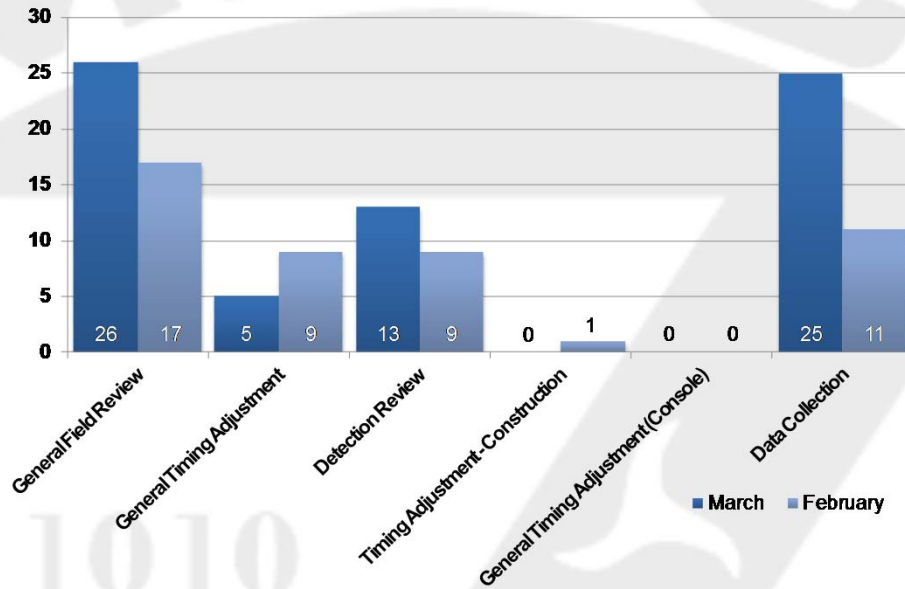
As reflected in the reliability network gauge above and throughout the report, Macomb County Department of Roads (MCDR) is undergoing an extensive upgrade of its communications system. Once this project is completed, the Traffic Operations Center (TOC) will have a more enhanced, reliable, and robust communications network. Of the network still available, the TOC has accomplished a 100% network reliability.

MCDR's new website (<http://roads.macombgov.org>) was redesigned to align with Macomb County's website. The old address ([www.rcmcweb.org](http://www.rcmcweb.org)) will re-direct the user to the new website. The "MCDR Website Hits" chart on page 4 shows the website hits from both the old and new web addresses. There was a total of 7,450 hits in the month of March. An initiative of the TOC is to create a TOC-specific page in the coming months. The TOC encourages all stakeholders to add or update the MCDR's website address.



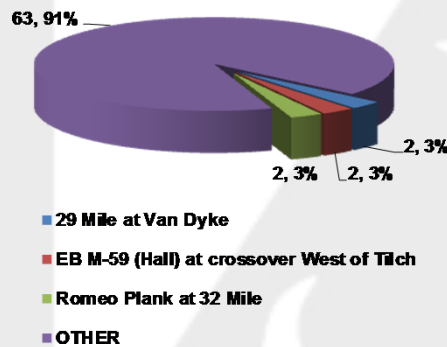
**John Abraham, PhD, PE, PTOE**  
Director of Traffic & Operations  
Macomb County Department of Roads  
117 S Groesbeck Hwy  
Mount Clemens, MI 48043  
586-463-8671  
[JAbraham@RCMCWeb.org](mailto:JAbraham@RCMCWeb.org)

## Field/Console Reviews Completed



Compilation of the general field/console review types completed by the Traffic Operations Engineers. Field/console reviews are assigned after a public/stakeholder concern warrants an investigation. Reviews are either conducted in the field or at an Operator console through a network connection.

## Service Requests By Intersection



Motorists and public agencies contact the TOC to provide feedback on intersection functionality. This month, the intersections where TOC engineers focused attention to address the feedback were 29 Mile at Van Dyke, EB M-59 (Hall) at the crossover West of Tilch (restored normal color operation from flashing) and Romeo Plank at 32 Mile.

The pattern between intersections near 29 Mile at Van Dyke did not align with the target intersection. A TOC Engineer inputted the correct timing sequence to correct the concern.

The bridge nearby Romeo Plank at 32 Mile needed emergency repairs. A TOC engineer implemented alternative traffic patterns along the detours to remedy any traffic concerns.

## Executed Roadway Upgrades

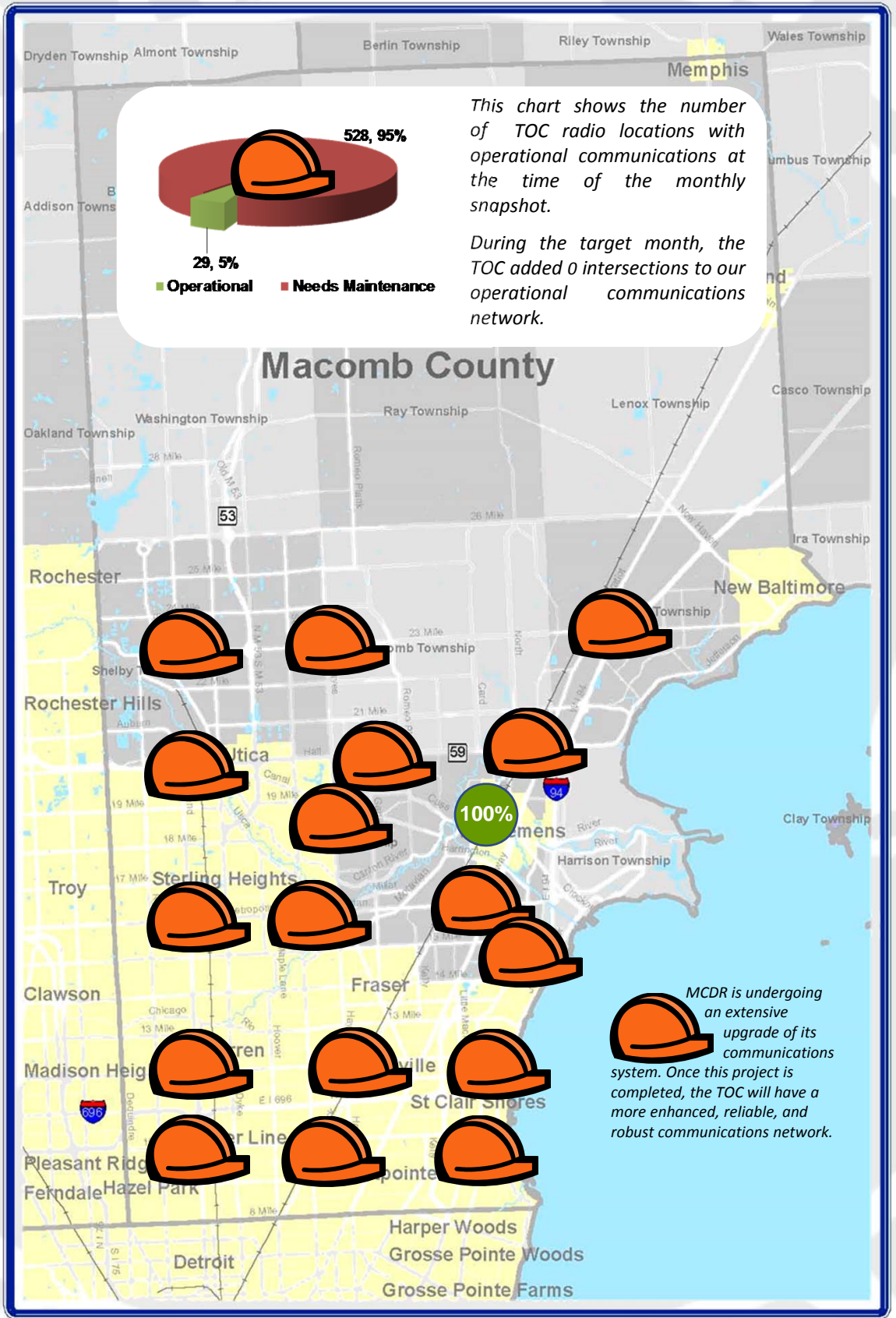
Date	Intersection Identification	Organization	Upgrade
03/10/2015	622: Harrington at Moravian	MCDR	New cabinet, controller (2070 with NEMA base) and software (D4)
03/12/2015	339: Schoenherr at 14 Mile	MCDR	New cabinet to replace one that was hit
03/13/2015	278: Mound at 10 Mile	MCDR	New cabinet to replace one that was hit
03/31/2015	652: Hayes at 22 Mile	MCDR	Installed new detection and new ITS timing
03/16 thru 03/20/2015	Hayes Corridor	KHA	Optimized timings at 13 intersections from Utica to 24 Mile

Tracks the roadway upgrades executed in Macomb County, including those done by other transportation agencies, also lists a description of the upgrade performed.

# Regional Communications Summary

ITS MAINTENANCE

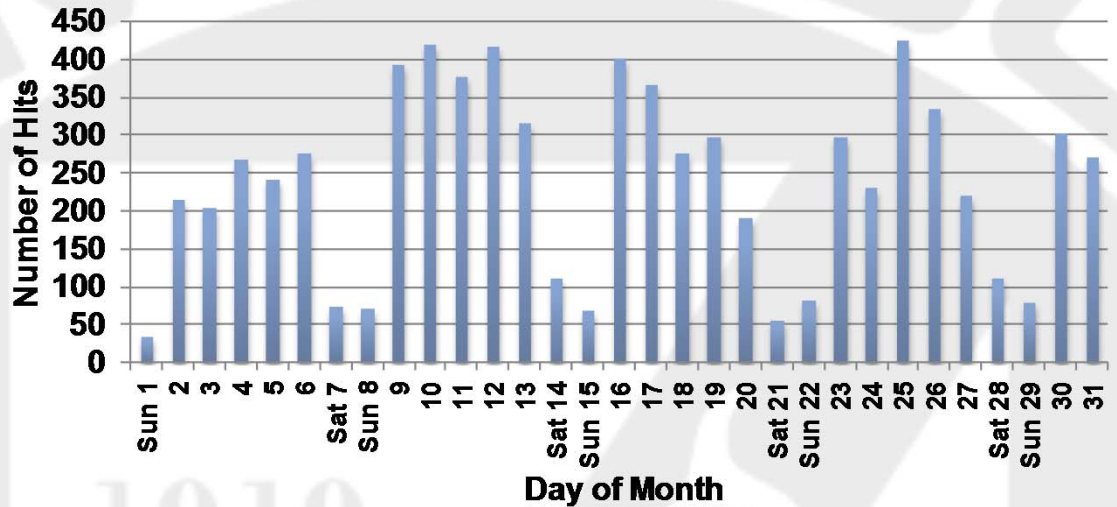
MARCH 2015



Macomb County maintains 18 communications hubs which transmit data between the Traffic Operations Center and regions of traffic signal controllers across the County. The numbers above represent a one-time monthly snapshot of operational communication to each region. Regions considered to have operational communications (80% or above) are shown in green, while regions found not to have operational communications (<80%) at the time of the snapshot are shown in red.



## MCDR Website Hits



Combined website hits accrued at the <http://www.rcmcweb.org/> and the new <http://raods.macombgov.org/>.

## County Corridor Communications Availability



Corridor	Current Month	Previous Month	Change
9 Mile	0%	0%	0%
10 Mile	0%	0%	0%
I-696 Service Drive	0%	0%	0%
12 Mile	0%	0%	0%
14 Mile	0%	0%	0%
15 Mile	0%	0%	0%
Metro Parkway	0%	0%	0%
Hall (M-59)	0%	0%	0%
Dequindre	0%	0%	0%
Ryan	0%	0%	0%
Mound	0%	0%	0%
Hoover	0%	0%	0%
Schoenherr	0%	0%	0%
Gratiot (M-3)	17%	17%	0%
Harper	0%	0%	0%

The table above represents a one-time monthly snapshot of communications along major corridors in Macomb County. Corridors which are considered to have operational communications (80% and above) are shown in green, while corridors found not to have operational communications (<80%) at the time of the snapshot are shown in red.



MCDR is undergoing an extensive upgrade of its communications system. Once this project is completed, the TOC will have a more enhanced, reliable, and robust communications network. Of the network still available, the TOC has accomplished an average of 90% network reliability.

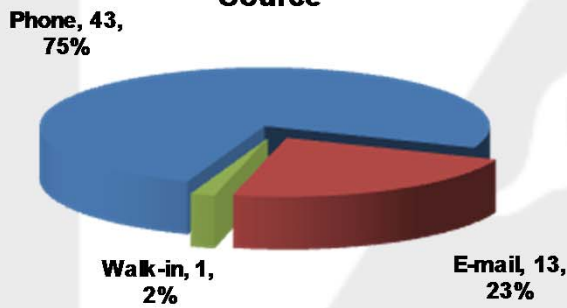
## Frequent Crash Locations

Jurisdiction	Intersection Identification	Crashes
Sterling Heights	Van Dyke (M-53) at 18 Mile	9
Macomb Township	Hall (M-59) at Garfield	9
Roseville	Graitiot (M-3) at 11 Mile (EB I-696 Service Drive)	8
Warren	Schoenherr at 13 Mile	8
Fraser	Utica at 15 Mile	8
Macomb Township	23 Mile at Romeo Plank	8
Warren	Dequindre at 14 Mile	7
Fraser	Groesbeck at Utica	7
Macomb Township	Hall (M-59) at Hayes	7
Sterling Heights	Mound at Metropolitan Parkway	7

Utilizing crash data from Michigan State Police, the top ten intersections by number of crashes.  
 Note: the crash data is from February 2015 due to delayed availability of data.

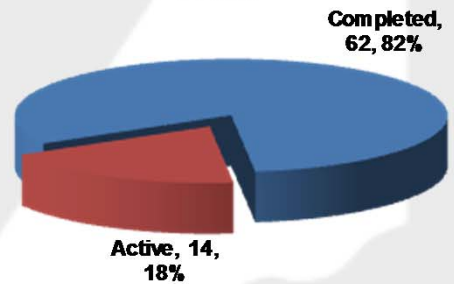
## Customer Service Communications

**Source**



Source of service requests taken by Traffic Operations Center staff during the target report month.

**Status**



Status of all service requests closed by Traffic Operations Center staff through the end of the month.

## Major Construction and Maintenance

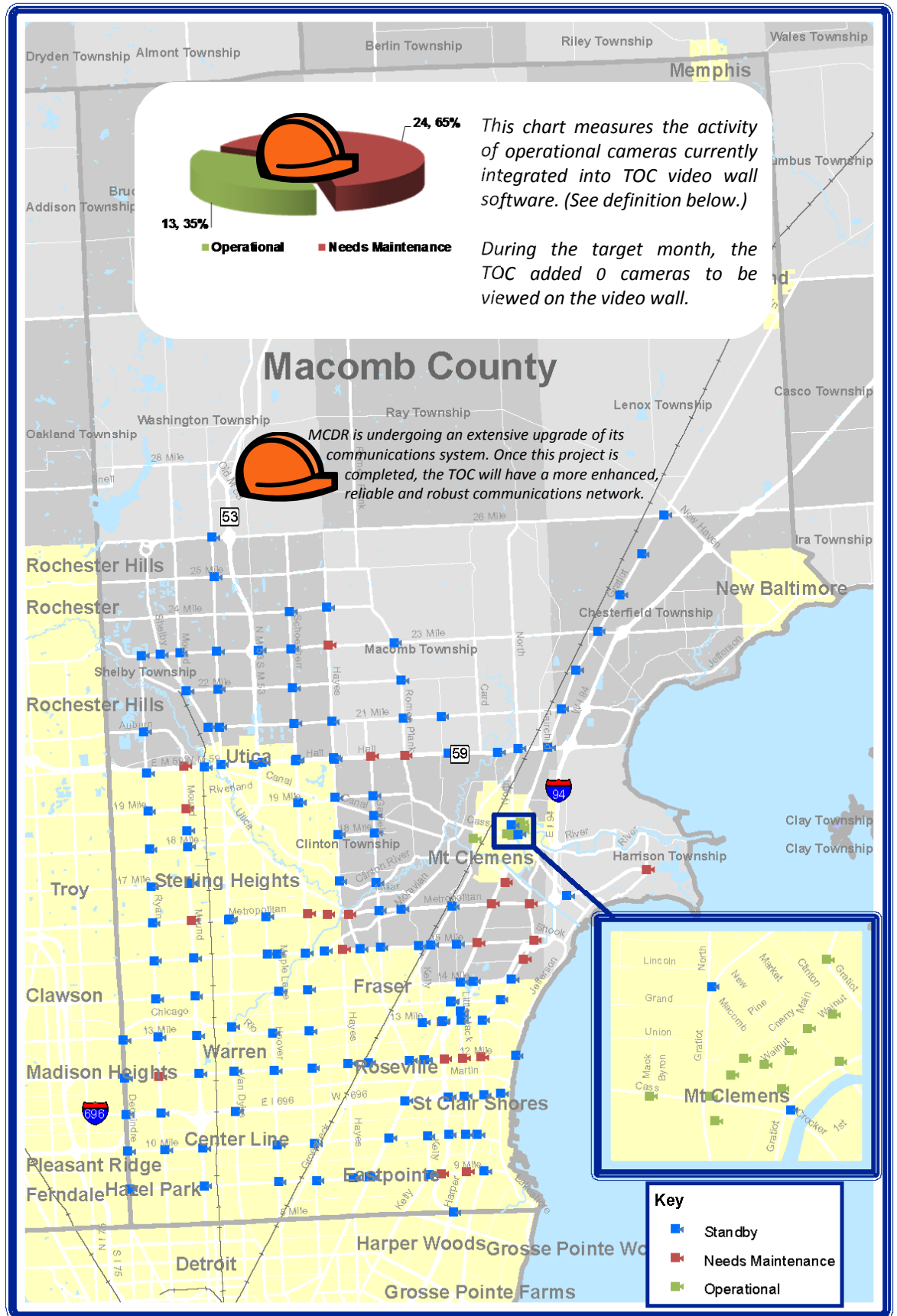
Project Parameters	Start Date	Approximate Completion Date	Location(s)
Construction	07/07/2014	08/01/2015	Hayes between 21 Mile and 23 Mile
Construction	10/01/2014 updated 03/26/2015	To be determined	24 Mile between Schoenherr and Hayes
Construction	10/29/2014 updated 03/26/2015	To be determined	24 Mile between Mound and Van Dyke
Construction	02/20/2015	08/01/2015	34 Mile between Campground and Fisher
Construction	03/26/2015	To be determined	32 Mile between Powell and Romeo Plank

Out of the many projects that occur on Macomb County roads, these projects potentially have the most impact to motorists.

# Current Camera Locations

# CAMERA COVERAGE

MARCH 2015



Cameras currently deployed and under Macomb County Department of Roads jurisdiction.

Cameras considered operational were available 80% of the target month.

Cameras needing maintenance were available for less than 80% of the target month.

Cameras in "Standby" have not yet been integrated into TOC video wall software.

