

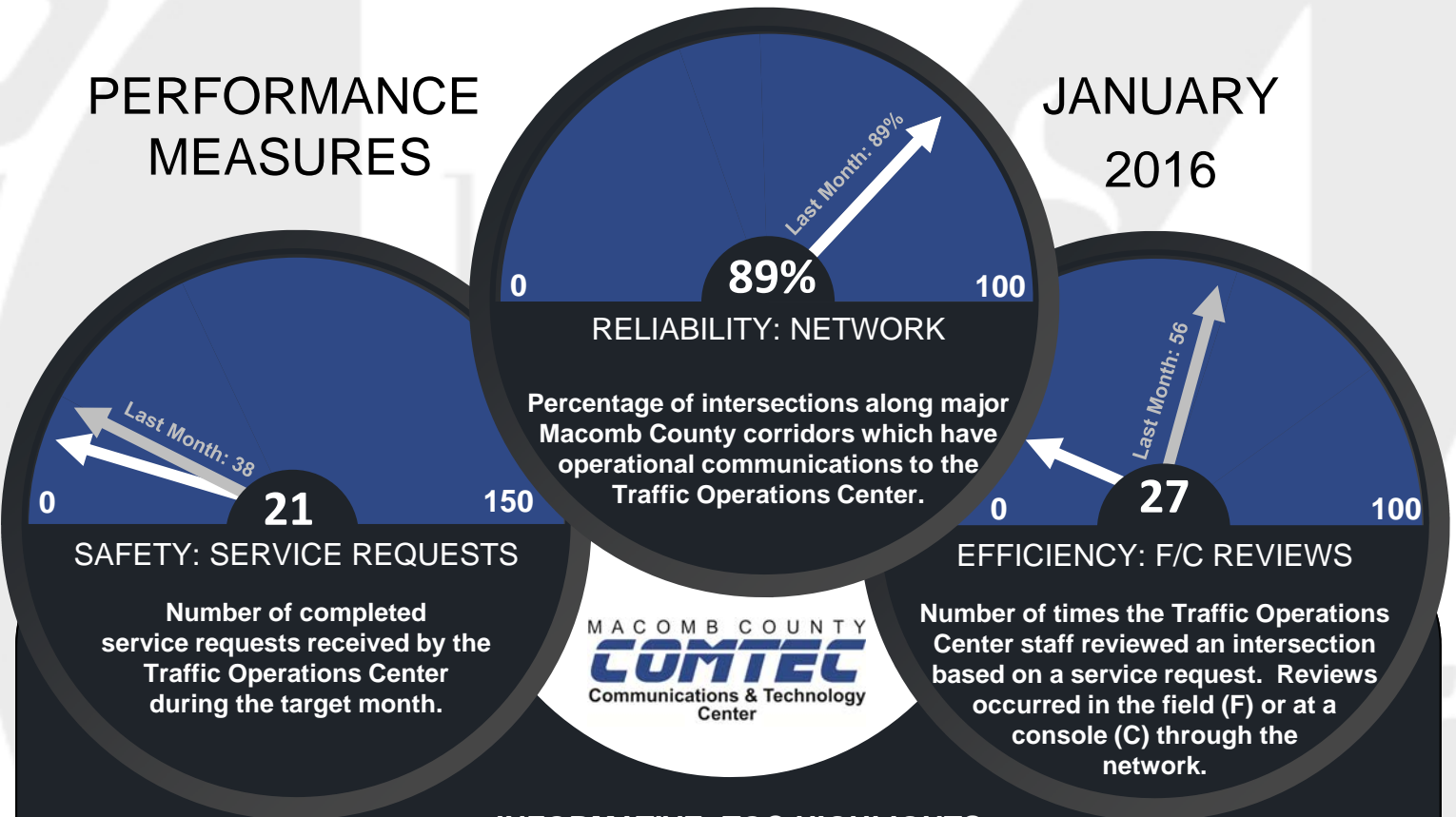
MACOMB COUNTY DEPARTMENT OF ROADS

TRAFFIC OPERATIONS CENTER

"To provide and maintain a reliable real-time traffic operations system, in coordination with county stakeholders, that enables a safe, efficient, and informative travel experience."

PERFORMANCE MEASURES

JANUARY 2016



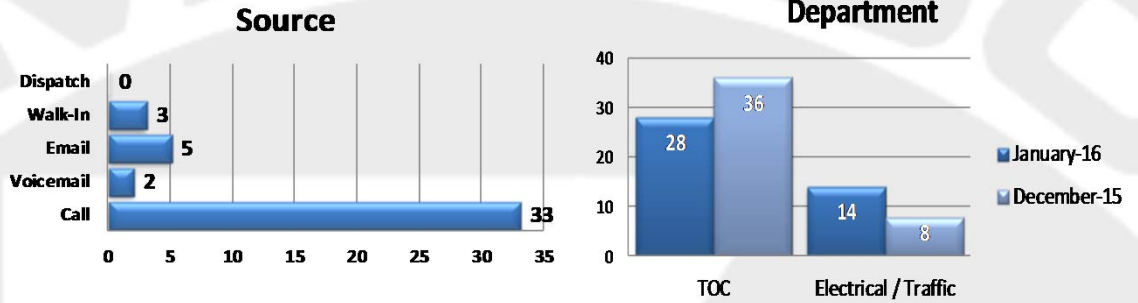
INFORMATIVE: TOC HIGHLIGHTS

The Macomb County Department of Roads (MCDR) Traffic Operations Center (TOC) had a strong start to 2016. Work began on the 2015 Safety project, as the TOC engineers worked with MCDR inspectors to develop testing environments for each locations involved in the project. This process allows for efficient operations on the day of field installations for each particular location. Construction is expected to begin in February. NexGen implementation reached its final steps and engineers and management. Additionally, the TOC collaborated with multiple departments to host Michigan Traffic Incident Management Effort (MITIME) Incident management training. Discussions were held involving clearing incidents and more efficient operations with regards to emergency response.

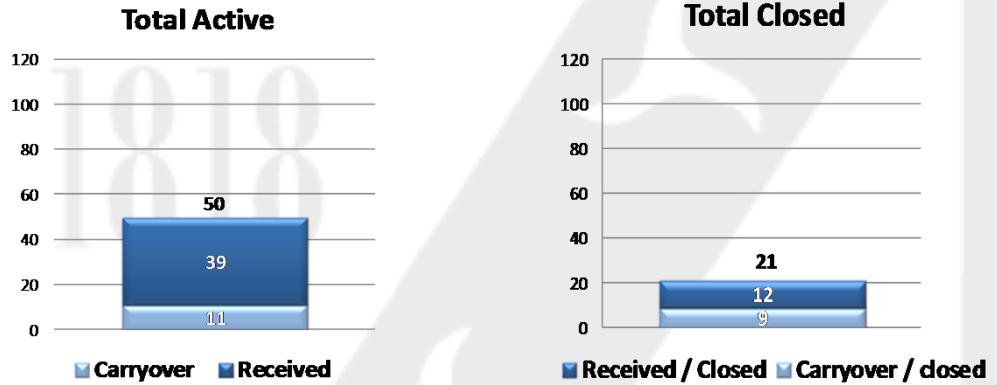


John Abraham, PhD, PE, PTOE
Director of Traffic & Operations
Macomb County Department of Roads
117 S Groesbeck Hwy
Mount Clemens, MI 48043
586-463-8671
JAbraham@RCMCWeb.org

Service Requests

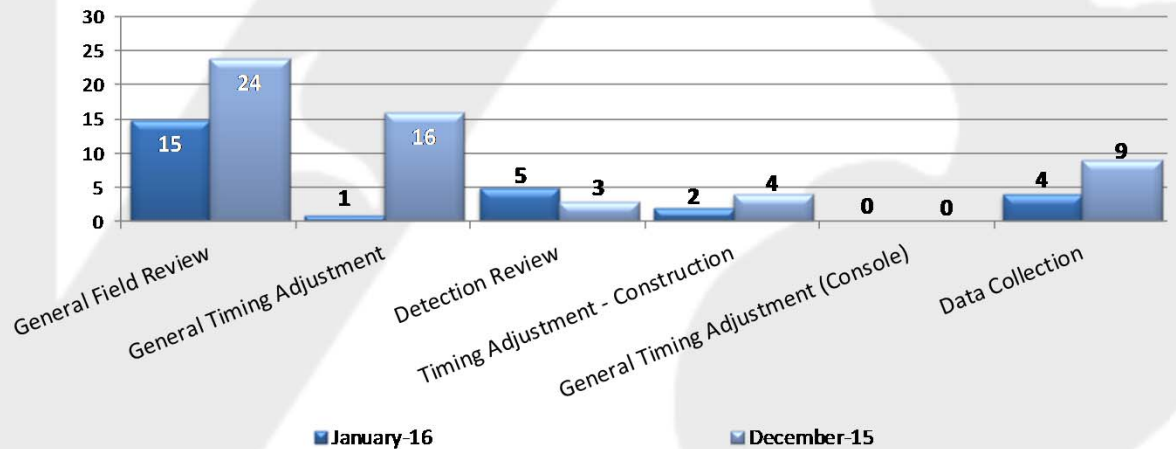


For the month of January, 42 incoming requests regarding traffic signals were received. The 'Source' chart shows how the service request was received by the TOC. The 'Department' chart shows the group handling the service request.



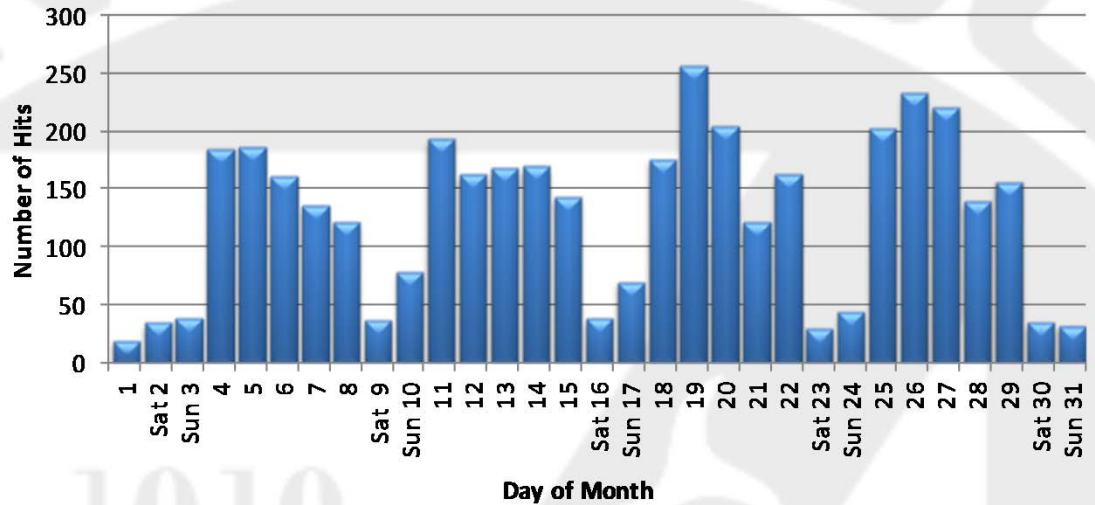
At the end of January, 9 service requests will carry over into February 2016.

Field/Console Reviews Completed



Compilation of the general field/console review types completed by the Traffic Operations Engineers. Field/console reviews are assigned after a public/stakeholder concern warrants an investigation. Reviews are either conducted in the field or at an Operator console through a network connection.

MCDR Website Hits



Combined website hits accrued at the <http://www.rcmcweb.org/> and the new <http://roads.macombgov.org/>.

County Corridor Communications Availability

Corridor	Current Month	Previous Month	Change
9 Mile	100%	100%	0%
10 Mile	100%	100%	0%
I-696 Service Drive	100%	100%	0%
12 Mile	100%	100%	0%
14 Mile	100%	100%	0%
15 Mile	100%	100%	0%
Metro Parkway	100%	95%	5%
Hall (M-59)	98%	98%	0%
Dequindre	100%	92%	8%
Ryan	100%	100%	0%
Mound	100%	100%	0%
Hoover	100%	100%	0%
Schoenherr	100%	100%	0%
Hayes	100%	100%	0%
Gratiot (M-3)	97%	96%	1%
Harper	100%	100%	0%

The table above represents a one-time monthly snapshot of communications along major corridors in Macomb County. Corridors which are considered to have operational communications (90% and above) are shown in green, while corridors found not to have operational communications (<90%) at the time of the snapshot are shown in red.

Executed Roadway Upgrades

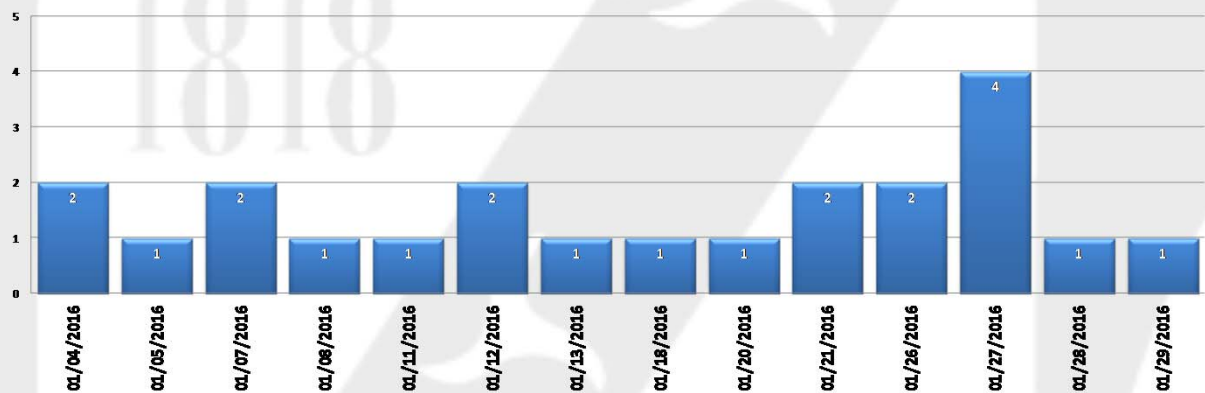
Date	Location	Organization	Upgrade
01/07/2016	335: 15 Mile at Chrysler	MCDR	New signals installed
01/08/2016	549: 17 Mile at Ford	MCDR	New signals installed
01/26/2016	618: WB Metro Parkway at X-over East of Groesbeck (M-97)	MCDR	New signals installed
01/26/2016	647: EB Metro Parkway at X-over 475' West of Gratiot (M-3)	MCDR	New signals installed

Tracks the roadway upgrades executed in Macomb County, Including those done by other transportation agencies, also lists a description of the upgrades performed.

GovDelivery Notifications

In the month of January, the TOC sent out 22 GovDelivery notifications, and increased the number of recipients from 209 to 226 receiving notifications.

Note: The chart below only shows data for the days GovDelivery notifications were sent from the TOC.



GovDelivery is a tool to notify Macomb County motorists of any incident blocking at least one lane of traffic, or causing traffic issues. The notifications are only sent after the incident has been verified by camera, Sheriff and/or local police agencies.

 [Sign up for incident notifications on weekdays from 6 a.m. to 6 p.m. causing lane or roadway closures on major Macomb County arterials.](#)

Major Construction and Maintenance

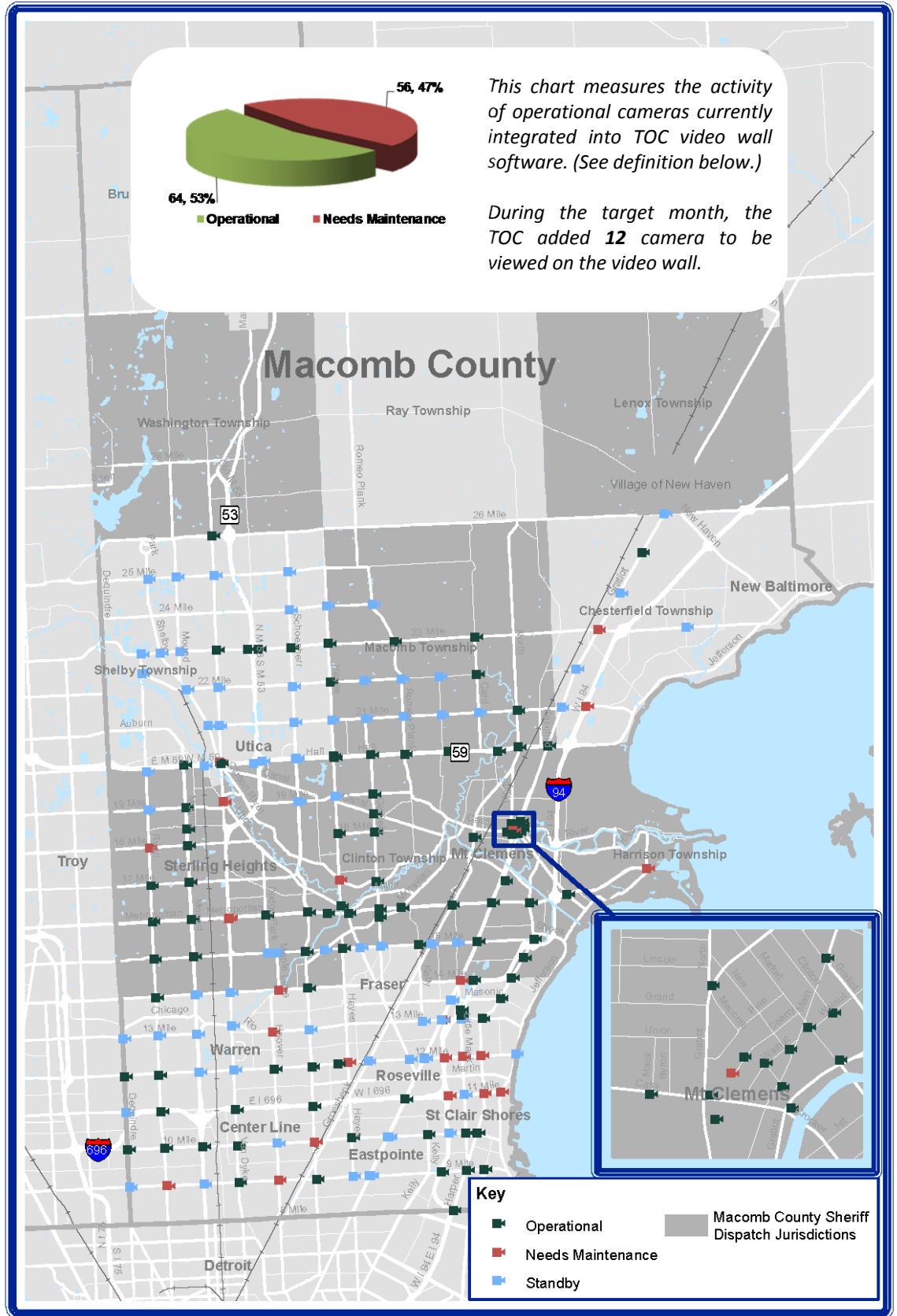
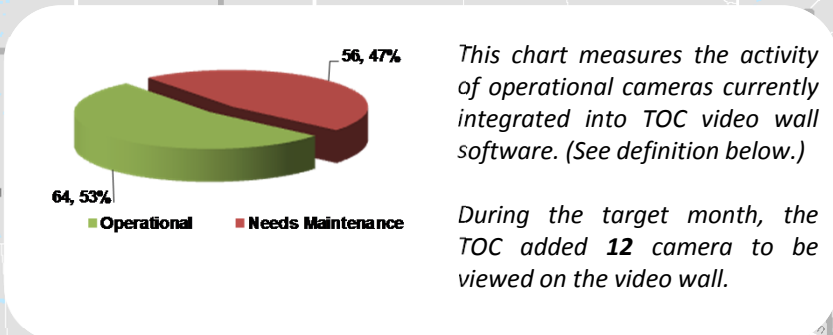
Project Parameters	Start Date	Approximate Completion Date	Location(s)
Construction	03/26/2015	To be determined	32 Mile between Powell and Romeo Plank
Construction	10/29/2014 updated 06/05/2015	To be determined	24 Mile between Schoenherr and Hayes
Construction	06/18/2015	To be determined	24 Mile between Van Dyke (M-53) and Jewell
Construction	06/18/2015	To be determined	WB 24 Mile from Brookfield to Shelby
Construction	07/20/2015	05/15/2016	Metro Parkway between Groesbeck (M-97) and Gratiot (M-3)
Construction	07/30/2015	To be determined	31 Mile east of Mt. Vernon across the Stoney Creek (Bridge)
Construction	07/30/2015	To be determined	27 Mile east of Hayes across the Stoney Creek (Bridge)
Construction	11/6/2015	To be determined	Shook Road Bridge over the Clinton-Harrison Drain
Construction	11/19/2015	To be determined	Quinn Road Bridge located between Oakview and I-94

Out of the many projects that occur on Macomb County roads, these projects potentially have the most impact to motorists.

Current Camera Locations

CAMERA COVERAGE

JANUARY 2016



Cameras currently deployed and under Macomb County Department of Roads jurisdiction.
 Cameras considered operational were available 90% of the target month.
 Cameras needing maintenance were available for less than 90% of the target month.
 Cameras in "Standby" have not yet been integrated into TOC video wall software.

